



PREMIUM  
**POWER**  
BULL SALE

**NOVEMBER 3, 2023**

**1 P.M. | HARDEE COUNTY CATTLEMAN'S ARENA | WAUCHULA, FL**

# PREMIUM **P**OWER BULL SALE

1 P.M. | HARDEE COUNTY CATTLEMAN'S ARENA | WAUCHULA, FL

## EVENTS FOR SALE WEEK!

**NOV. 1 BULLS ARRIVE**

**NOV. 2 BULL VIEWING ALL DAY**

**NOV. 3 SALE DAY**

**7-12 BULL VIEWING | 12-1 LUNCH | 1 BULL SALE**

## SALE FACILITY ADDRESS

**Hardee County Cattleman's Arena**

**507 Civic Center Drive**

**Wauchula, FL 33873**



## DIRECTIONS TO SALE FACILITY

**FROM SEBRING - TRAVEL NORTH ON US HWY 27 TOWARDS AVON PARK. TURN LEFT ON SR 64. AFTER 12 MILES, STAY STRAIGHT TO CONTINUE ON E MAIN ST TOWARDS WAUCHULA. CONTINUE ON E MAIN ST THROUGH THE TOWN OF WAUCHULA, THEN TURN LEFT ONTO ALTMAN RD. CONTINUE SOUTH ON ALTMAN RD FOR APPROXIMATELY ONE MILE, AND THE FAIRGROUNDS PARKING LOT WILL BE ON THE RIGHT.**

**FROM ARCADIA - TRAVEL NORTH ON HWY 17 TOWARDS WAUCHULA. TURN LEFT ON STENSTROM RD. TRAVEL APPROXIMATELY 1.5 MILES. TURN LEFT ONTO ALTMAN RD, AND THE FAIRGROUNDS PARKING LOT WILL BE JUST AHEAD ON THE RIGHT.**

**FROM BRADENTON/SARASOTA - TRAVEL EAST ON SR 64 TOWARDS ZOLFO SPRINGS. APPROXIMATELY 3 MILES PAST THE CAUTION LIGHT IN ONA, TURN LEFT ONTO W MAIN ST. CONTINUE ON W MAIN ST FOR APPROXIMATELY 5.5 MILES, THEN TURN RIGHT ONTO ALTMAN RD. TRAVEL SOUTH ON ALTMAN RD FOR APPROXIMATELY ONE MILE, AND THE FAIRGROUNDS PARKING LOT WILL BE ON THE RIGHT.**

**FROM LAKELAND/BARTOW - TRAVEL SOUTH ON HWY 17/US 98 TOWARDS WAUCHULA. TURN RIGHT ON STENSTROM RD. TRAVEL APPROXIMATELY 1.5 MILES. TURN LEFT ONTO ALTMAN RD, AND THE FAIRGROUNDS PARKING LOT WILL BE JUST AHEAD ON THE RIGHT.**

**CO-SALE MANAGERS**

**COLSON CANNON**  
352-345-3716

**LAUREN LYSSY**  
210-414-2119

**HABLA ESPAÑOL:**  
**ABE SAENZ**  
210.508.0551

[INFO@PREMIUMPOWERBULLSALE.COM](mailto:INFO@PREMIUMPOWERBULLSALE.COM)

**SALE CONSULTANT**

**ROBBINS CATTLE MARKETING**  
BRUCE ROBBINS  
(210) 861- 5136  
[ROBBINSCATTLE@ATT.NET](mailto:ROBBINSCATTLE@ATT.NET)

**RCCM**



**SCAN THE QR CODE TO VISIT OUR WEBSITE**  
[PREMIUMPOWERBULLSALE.COM](http://PREMIUMPOWERBULLSALE.COM)

**AUCTIONEER/SALES CONSULTANT**

**CRACKER AUCTION SERVICES**  
CHAD "CRACKER" JOHNSON  
(352) 535-5320  
[CJAUCTIONEER@GMAIL.COM](mailto:CJAUCTIONEER@GMAIL.COM)



**HOTELS**

**BEST WESTERN HERITAGE INN & SUITES**  
2727 US HWY 17N  
BOWLING GREEN, FL 33834  
863-773-2378

**HOLIDAY INN EXPRESS & SUITES**  
2709 SE HWY 70  
ARCADIA, FL 34266  
863-494-5900

**CATALOG DESIGN**



# WELCOME FELLOW CATTLEMEN!

We are excited to have you join us on Friday, November 4th for our 2nd annual Premium Power Beefmaster Bull Sale. The sale is located in the heart of Florida cattle country at the Hardee County Cattleman's Arena in Wauchula, Florida. The Premium Power Partners are a group of like-minded Beefmaster breeders from across the south, who have come together to create a sale specifically for the business minded cattleman and their bull needs. Whether you are needing a purebred seedstock bull, or looking to utilize Beefmaster genetics in a commercial operation, we have the bulls to help you succeed. Our genetics have been seen throughout the south for generations and continue to succeed and demand value for their calves.

We have put together an impressive line up of Beefmaster bulls. Our bulls have been developed in Williston, FL at Etheridge Cattle Company on a high roughage based ration. These bulls are built on years of maternal based selection and their daughters will not disappoint, while their sons will smash the scales. In today's times of EPD's galore some breeds and programs have forgotten about the most important part of their herd, the momma cow. Let our bulls put a maternal punch into your program! All bulls have their full performance data, residual feed intake data (RFI) and come with a BSE. The bulls will be available for viewing starting Thursday, November 2nd in Wauchula. If you have any questions about the bulls, their development, or delivery please feel free to contact us. More information will be available on our website [www.premiumpowerbullsale.com](http://www.premiumpowerbullsale.com).

We Look forward to visiting with you in Wauchula!

**Colson Cannon | Lauren Lyssy**

325-345-3716 | 210-414-2119 | [info@premiumpowerbullsale.com](mailto:info@premiumpowerbullsale.com)



# RAISED BY CATTLEMEN FOR CATTLEMEN

## **BIRTH**

Within 24 hours of birth, every calf has a birth weight collected and tagged with identification number.

## **3-4 MONTHS OLD**

Bulls are dehorned if needed, vaccinated with Triangle 5 and Vision 8 and dewormed.

## **6-8 MONTHS OLD**

Bulls are branded, weaning weights collected, vaccinated again with Bovi-Shield Gold 5 and Vision 8 and dewormed. Once weaned bulls are placed on high roughage grower ration and evaluated for culling at this time.

## **8-12 MONTHS OLD**

At this time bulls enter the feed efficiency portion of the bull test. Every bulls goes through the C-Lock

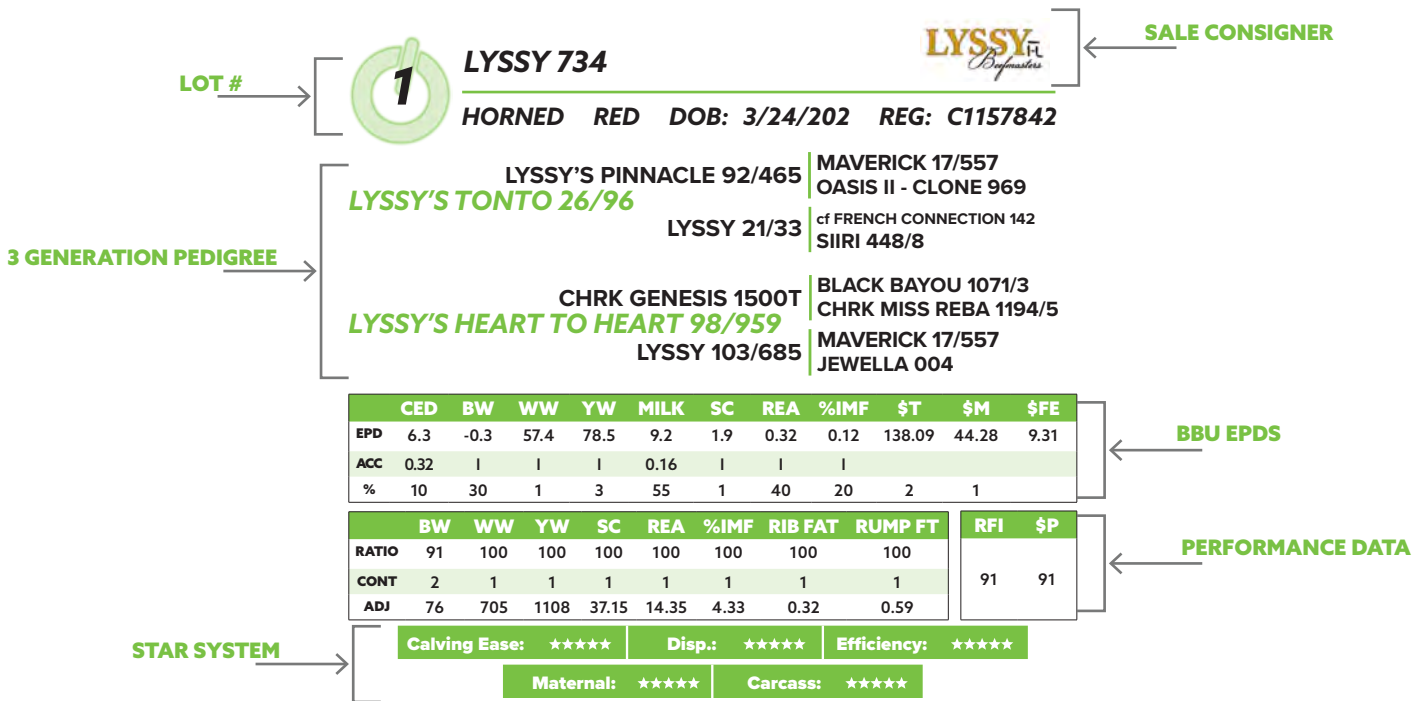
SmartFeed efficiency test system at the Southern Beef Performance Center at Etheridge Cattle Company. After the 30 day warmup period the bulls are tested for a 75+ day period for RFI, FCR and ADG on a roughage based ration designed to target 3.5 ADG. After the test period is over the bulls are then carcass ultrasounded for REA, IMF and Rib Fat measurements. We also obtain their yearling weights, scrotal circumference and sort any culls at this time.

## **12 MONTHS - SALE TIME**

Bulls are turned out into large grass traps while being supplemented with the grower ration to condition the bulls for service. Multimin 90 is given 45 days before breeding soundness exams which are taken 60 days before sale day.



# HOW TO READ THE CATALOG



## EPD - EXPECTED PROGENY DIFFERENCE

Expected Progeny Difference is an estimate of an animal's genetic merit for a particular trait. This allows for comparison of animals within the breed for their genetic potential as parents. EPD's take into account the animal's own performance compared to their contemporaries and the performance of their relatives compared to their contemporaries. Depending on your environment bigger is not always better.

## CONT. - CONTEMPORARY GROUP

Contemporary Group is a group of animals that have had an equal opportunity to perform - same sex, management and environmental conditions.

## ACC - ACCURACY

EPD accuracy refers to the reliability that can be placed on the EPD. An accuracy close to 1 indicates higher reliability.

## RATIO

A ratio is the performance of an individual animal relative to the average performance of his contemporaries. A ratio of 100% is average, while a ratio of 105% is 5% above herd average, and a ratio of 95% is 5% below herd average. The lowest birth weights will have the highest ratios. The higher the number the better.

## CED EPD - CALVING EASE DIRECT

Presented as the percent of an animal's calves that will be born unassisted over the population average. Higher calving ease direct scores represent more unassisted births and are considered superior. Note that this is opposite of the birth weight EPD in which lower EPDs generally represent fewer unassisted births.

## BW EPD - BIRTH WEIGHT

Expressed in pounds, a predictor of calf size compared to other sires. The lower the number the better.

## WW EPD - WEANING WEIGHT

Expressed in pounds, predicts growth potential from birth till weaning compared to other sires. The higher the number the better.

# HOW TO READ — THE CATALOG

## **YW EPD - YEARLING WEIGHT**

Expressed in pounds, predicts growth potential from weaning until yearling between sires. The higher the number the better.

## **MILK EPD - MILK**

A predictor of a sire's genetic merit for milk and mothering ability as expressed in his daughters compared to daughters out of other sires.

## **TM EPD - TOTAL MATERNAL**

A prediction of the total contribution of a sire's daughter to calf performance. The higher the number the better.

## **SC EPD - SCROTAL CIRCUMFERENCE**

Expressed in centimeters, a predictor of the difference of scrotal size compared to other sires. The higher the number the better.

## **REA EPD - RIBEYE AREA**

Expressed in square inches, a predictor of the difference in ribeye area size. The higher the number the better.

## **%IMF EPD - INTRAMUSCULAR FAT**

Expressed as a percentage, a predictor of the difference for percent intramuscular fat (marbling) in the ribeye muscle. The higher the number the better.

## **(\$M) EPD - MATERNAL INDEX**

Is designed to balance weaning weight with maintenance and fertility. Index includes BW, WW, Milk, YW and SC. The higher the number the better.

## **(\$T) EPD - TERMINAL INDEX**

Is designed for when cows are mated in a terminal system. Index includes YW, REA, IMF and Fat. The higher number the better.

## **(\$FE) EPD - FEED EFFICIENCY INDEX**

Balances post weaning growth with the RFI EPD. Designed to select for animals that excel in feed efficiency and post weaning growth. The higher the number the better.

## **CALVING EASE**

5 star (the easiest calving bulls, breed to first time heifers). 4 star (breed to larger frame more developed first time heifers) 3 stars or less (breed to mature cows only)

## **MATERNAL**

Estimate of maternal efficiency NOT milk. The bulls are scored from 1 to 5 stars. Five star bulls will produce the most profitable and good uddered cows in the industry. Based on calving intervals, udder quality, and mothering ability.

## **EFFICIENCY**

This refers to post weaning gain, conversion, and residual feed intake. Scored from 1 to 5 stars, where 5 star bulls will produce efficient easy keeping replacement females and top end profitable feeder calves.

## **CARCASS**

Balanced combination of ribeye area and intramuscular fat (marbling).

## **DISP.- DISPOSITION**

Scored from 1 to 5 stars, with 5 stars being the best. 3 star bulls are best suited for big country.

## **RFI - RESIDUAL FEED INDEX**

Actual RFI data obtained from our feed efficiency portion of the bull test. RFI is defined as the difference between an animals actual feed intake and its expected feed intake based on size and growth. The lower the number the better.

## **\$P - \$ PREMIUM**

An accumulation of average daily gain, feed conversion ratio and residual feed intake. The higher the number the better.

# PREMIUM POWER *REFERENCE SIRES*

**MAVERICK**



**CANNON MAXAMILLION**





# PREMIUM POWER REFERENCE SIRES

**VFF ENFORCER**



**LYSSY'S CUSTOM MADE**



**LYSSY'S STAND ALONE**



# PREMIUM POWER *REFERENCE SIRES*

**MR CJ 1737**



**LYSSY'S BIG CHIEF**



**LYSSY'S TONTO**



# Can't make it?



Register to create an account and watch the online bidding tutorial. Apply for bidding approval online at least 24 hours prior to the auction or call for immediate approval. You will receive an email from DVAuction once you have been approved. After the sale has completed, please contact the sale directly for settlement.

Call DVAuction technical support at 402-316-5460 for any problems.



# CANNON 2-39



**POLLED RED DOB: 1/8/22 REG: C1173119**

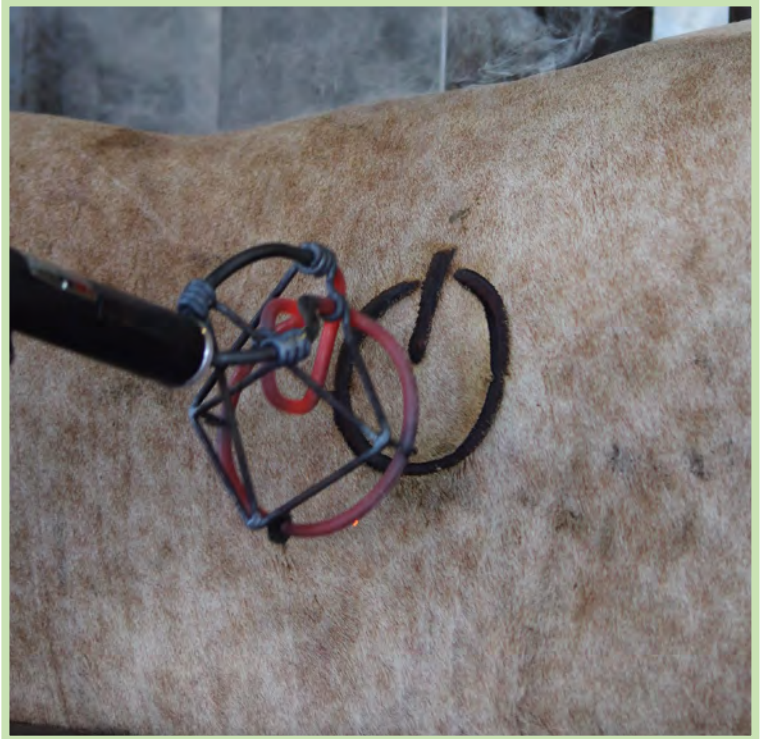
**VFF NEW HORIZON 19/3** | **MAVERICK 17/557**  
**VFF ENFORCER 306E** | **VFF HONEY GIRL 43/8**  
**VFF MS ADV 77-4** | **VFF MR 16/2**  
**009Y**

**TVR 1326** | **DR. J 15/1** | **INFINITY 120/96**  
**20/5**  
**PROVEN PRISSY 1053-1** | **BULLET PROOF 864**  
**5065**

	CED	BW	WW	YW	MILK	SC	REA	%IMF	\$T	\$M	\$FE
EPD	4.1	0.2	46	75.8	10.4	1.2	0.25	0.42	135.66	28.35	23.64
ACC	0.32	0.54	0.54	0.53	0.17	0.41	0.52	0.57			
%	40%	45%	10%	4%	35%	10%	55%	1%	3%	10%	10%

	BW	WW	YW	SC	REA	%IMF	RIB FAT	RUMP FT	RFI	\$P
RATIO	96	106	111	101	105	113	156	81		
CONT	4	4	4	4	4	4	4	4	-1.31	\$117.68
ADJ	76	635	1230	34.57	13.01	3.47	0.53	0.39		

**CALVING EASE: ★★★** | **DISP.: ★★★** | **EFFICIENCY: ★★★★★**  
**MATERNAL: ★★★** | **CARCASS: ★★★★★**



**Selling 50% semen interest, Full possession**



# LYSSY'S RENEGADE 252



**POLLED BLACK DOB: 9/10/21 REG: M11366**

**MR CJ 1737** | **CJ'S LOVE MAKER 1420** | **CF DR. LOVE 414**  
**101/1** | **CJ'S DIAMOND REFLECTION 1203**  
**TRIPLE THREAT 1503/7**  
**AMAZING ROSE 8032**

**219** | **MR TRINITY 533**  
**8121** | **GDH 401**  
**33/9**

	CED	BW	WW	YW	MILK	SC	REA	%IMF	\$T	\$M	\$FE
EPD	3.5	0.1	36	56	9.7	1.3	0.41	0.15	99.66	26.81	15.83
ACC	0.32	0.5	0.52	0.49	0.16	0.48	0.47	0.53			
%	55%	45%	20%	30%	45%	5%	30%	15%	20%	15%	40%

	BW	WW	YW	SC	REA	%IMF	RIB FAT	RUMP FT	RFI	\$P
RATIO	98	104	105	99	108	106	113	127		
CONT	3	3	3	3	3	3	3	3	-0.12	\$108.48
ADJ	77	729	1207	39.87	16.33	3.27	0.36	0.61		

**CALVING EASE: ★★★** | **DISP.: ★★★★★** | **EFFICIENCY: ★★★**  
**MATERNAL: ★★★★★** | **CARCASS: ★★★★★**

**Selling 50% semen interest, Full possession - 2C ADVANCER**

## LOT #2





# LYSSY 745



**POLLED RED DOB: 9/1/21 REG: C1168911**

VFF NEW HORIZON 19/3  
**VFF ENFORCER 306E**  
VFF MS ADV 77-4

MAVERICK 17/557  
VFF HONEY GIRL 43/8  
VFF MR 16/2  
009Y

MCALESTER 4521  
**NG MS MCALESTER 1849G2**  
CHRK BLACK RUBY 1849X

J & K 1001  
95  
BLACK BAYOU 1071/3  
CHRK MISS REBA 1194/5

## LOT #3



	CED	BW	WW	YW	MILK	SC	REA	%IMF	\$T	\$M	\$FE
EPD	3	0.7	70.8	113.5	9.3	2.1	1	0.28	199.87	39.57	34.78
ACC	0.32	0.56	0.56	0.57	0.16	0.55	0.55	0.61			
%	65%	65%	1%	1%	55%	1%	2%	4%	1%	1%	1%

	BW	WW	YW	SC	REA	%IMF	RIB FAT	RUMP FT	RFI	\$P
RATIO	99	105	112	106	118	119	146	126		
CONT	14	14	14	14	14	14	14	14	3.2	\$92.16
ADJ	78	748	1216	36.92	16.9	2.09	0.35	0.44		

CALVING EASE:	★★	DISP.:	★★★★	EFFICIENCY:	★★
MATERNAL:	★★★★	CARCASS:	★★		



# CANNON 1-21



**SCURS RED DOB: 9/20/21 REG: C1173114**

VFF NEW HORIZON 19/3  
**VFF ENFORCER 306E**  
VFF MS ADV 77-4

MAVERICK 17/557  
VFF HONEY GIRL 43/8  
VFF MR 16/2  
009Y

**TVR 1326**

DR. J 15/1  
PROVEN PRISSY 1053-1

INFINITY 120/96  
20/5  
BULLET PROOF 864  
5065

## LOT #4



	CED	BW	WW	YW	MILK	SC	REA	%IMF	\$T	\$M	\$FE
EPD	3.5	0.2	37.6	63.3	11.4	1	0.1	0.44	114.76	25.09	20.2
ACC	0.32	0.54	0.55	0.53	0.17	0.51	0.51	0.57			
%	50%	50%	20%	15%	20%	15%	70%	1%	10%	15%	15%

	BW	WW	YW	SC	REA	%IMF	RIB FAT	RUMP FT	RFI	\$P
RATIO	94	105	97	103	85	98	68	64		
CONT	6	6	4	4	4	4	4	4	-5.87	\$137.92
ADJ	80	707	1077	33.88	10.96	2.78	0.25	0.27		

CALVING EASE:	★★	DISP.:	★★★★	EFFICIENCY:	★★★★
MATERNAL:	★★★★	CARCASS:	★★		



# CANNON 1-26



SCURS RED DOB: 9/25/21 REG: C1173116

VFF NEW HORIZON 19/3  
VFF ENFORCER 306E

MAVERICK 17/557  
VFF HONEY GIRL 43/8  
VFF MR 16/2  
009Y

TVR 1326

DR. J 15/1

INFINITY 120/96  
20/5

PROVEN PRISSY 1053-1

BULLET PROOF 864  
5065

	CED	BW	WW	YW	MILK	SC	REA	%IMF	\$T	\$M	\$FE
EPD	4.7	-0.1	38.9	66.6	10.2	0.9	0.2	0.5	120.51	23.76	21.89
ACC	0.32	0.54	0.55	0.53	0.17	0.51	0.51	0.57			
%	25%	35%	15%	15%	35%	20%	60%	1%	10%	20%	10%

	BW	WW	YW	SC	REA	%IMF	RIB FAT	RUMP FT	RFI	\$P
RATIO	105	97	96	98	99	139	154	131		
CONT	6	6	4	4	4	4	4	4	4.12	\$81.47
ADJ	71	653	1064	32.13	12.69	3.96	0.57	0.55		

CALVING EASE:	★★★★	DISP.:	★★★★	EFFICIENCY:	★★
MATERNAL:	★★★★	CARCASS:	★★★★★		

## LOT #5



# LYSSY 793



POLLED RED DOB: 10/26/21 REG: C1162435

VFF NEW HORIZON 19/3  
VFF ENFORCER 306E

MAVERICK 17/557  
VFF HONEY GIRL 43/8  
VFF MR 16/2  
009Y

NG MS MCALESTER 1849G2  
CHRK BLACK RUBY 1849X

J & K 1001  
95  
BLACK BAYOU 1071/3  
CHRK MISS REBA 1194/5

	CED	BW	WW	YW	MILK	SC	REA	%IMF	\$T	\$M	\$FE
EPD	2.8	0.7	69.9	110.1	10.5	2.3	0.91	0.36	194.85	42.35	32.78
ACC	0.32	0.56	0.56	0.57	0.16	0.55	0.55	0.61			
%	70%	65%	1%	1%	30%	1%	3%	2%	1%	1%	1%

	BW	WW	YW	SC	REA	%IMF	RIB FAT	RUMP FT	RFI	\$P
RATIO	93	104	108	114	110	143	121	146		
CONT	17	16	15	15	15	15	15	15	4.1	\$84.01
ADJ	81	784	1183	39.7	15.46	3.12	0.29	0.57		

CALVING EASE:	★★	DISP.:	★★★★★	EFFICIENCY:	★★
MATERNAL:	★★★★★	CARCASS:	★★★★★		



# LYSSY 790



SCURS RED DOB: 10/21/21 REG: P305469

VFF NEW HORIZON 19/3  
VFF ENFORCER 306E

MAVERICK 17/557  
VFF HONEY GIRL 43/8  
VFF MR 16/2  
009Y

NG MS MCALESTER 1849G2  
CHRK BLACK RUBY 1849X

J & K 1001  
95  
BLACK BAYOU 1071/3  
CHRK MISS REBA 1194/5

	CED	BW	WW	YW	MILK	SC	REA	%IMF	\$T	\$M	\$FE
EPD	2.6	1.1	73.7	116.1	10.3	2.1	0.93	0.29	204.4	42.6	34.55
ACC	0.17	0.53	0.54	0.54	0.14	0.52	0.52	0.57			
%	75%	80%	1%	1%	35%	1%	3%	4%	1%	1%	1%

	BW	WW	YW	SC	REA	%IMF	RIB FAT	RUMP FT	RFI	\$P
RATIO	96	108	112	104	106	97	100	123		
CONT	17	16	15	15	15	15	15	15	0.6	\$100.13
ADJ	79	819	1224	36.44	14.88	2.11	0.24	0.48		

CALVING EASE:	★★	DISP.:	★★★★★	EFFICIENCY:	★★★
MATERNAL:	★★★★★	CARCASS:	★★★		



# LYSSY 242



POLLED DUN DOB: 9/5/21 REG: C1162458

LYSSY'S TONTO 26/96 | LYSSY'S PINNACLE 92/465  
 LYSSYS BIG CHIEF 98/143 | LYSSY 21/33  
 JEWELLA 004 | RED RYDER 8035  
 COTTAGE 901

RED RYDER 8035 | BLACK BAYOU 1071/3  
 EMS AMAZING ACE 630  
 PANDORA 13/6 | CJ'S SOUL MAN 168  
 LADY V 579

30-0

	CED	BW	WW	YW	MILK	SC	REA	%IMF	\$T	\$M	\$FE
EPD	5.6	-0.8	41.6	62.8	10	1	0.62	0.4	112.95	30.95	7.81
ACC	0.32	0.54	0.53	0.53	0.18	0.51	0.52	0.58			
%	15%	20%	10%	15%	40%	15%	15%	2%	15%	5%	90%

	BW	WW	YW	SC	REA	%IMF	RIB FAT	RUMP FT	RFI	\$P
RATIO	112	107	114	101	116	109	192	154		
CONT	14	14	14	14	14	14	14	14	3.95	\$78.67
ADJ	69	763	1239	35.12	16.65	1.91	0.46	0.54		

CALVING EASE: ★★★ | DISP.: ★★★★★ | EFFICIENCY: ★★  
 MATERNAL: ★★★★★ | CARCASS: ★★★



# LYSSYS 788



HORNS RED DOB: 10/15/21 REG: C1162449

VFF NEW HORIZON 19/3 | MAVERICK 17/557  
 VFF ENFORCER 306E | VFF HONEY GIRL 43/8  
 VFF MS ADV 77-4 | VFF MR 16/2  
 009Y

MAVERICK 17/577 | SHELTON 9020  
 MISS TABASCO 929/4  
 JEWELLA 004 | RED RYDER 8035  
 COTTAGE 901

LYSSY 103/685

	CED	BW	WW	YW	MILK	SC	REA	%IMF	\$T	\$M	\$FE
EPD	6.7	-1.8	43.7	71	11.8	1.4	0.09	0.48	128.12	32.73	12.98
ACC	0.32	0.57	0.58	0.58	0.2	0.56	0.57	0.61			
%	5%	5%	10%	10%	15%	3%	70%	1%	5%	4%	60%

	BW	WW	YW	SC	REA	%IMF	RIB FAT	RUMP FT	RFI	\$P
RATIO	105	94	93	95	89	139	121	141		
CONT	17	16	15	15	15	15	15	15	-0.32	\$97.50
ADJ	72	711	1013	33.14	12.43	3.04	0.29	0.55		

CALVING EASE: ★★★ | DISP.: ★★★★★ | EFFICIENCY: ★★  
 MATERNAL: ★★★★★ | CARCASS: ★★★★★



# S3 2102



DEHORND DARK RED DOB: 2/10/2022 REG: C1161959

MR CJ 1737 | CJ'S LOVE MAKER 1420 | CF DR. LOVE 414  
 CJ'S DIAMOND REFLECTION 1203  
 101/1 | TRIPLE THREAT 1503/7  
 AMAZING ROSE 8032

WITTENBURG 7259 | JK WRANGLER 135/4 | CF DREAM CATCHER 914  
 JK WILD HONEY 47/2  
 3291 | BULLET PROOF 864  
 247

	CED	BW	WW	YW	MILK	SC	REA	%IMF	\$T	\$M	\$FE
EPD	3	0.8	32.4	50.8	9	1.2	0.21	-0.08	88.07	23.23	12.06
ACC	0.32	0.5	0.51	0.5	0.17	0.36	0.49	0.55			
%	65%	70%	30%	40%	60%	10%	60%	75%	35%	20%	70%

	BW	WW	YW	SC	REA	%IMF	RIB FAT	RUMP FT	RFI	\$P
RATIO	100	108	106	109	106	75	108	147		
CONT	7	7	6	6	5	5	5	5	0.84	\$100.86
ADJ	86	755	1143	39.73	13.35	1.62	0.26	0.63		

CALVING EASE: ★★★ | DISP.: ★★★★★ | EFFICIENCY: ★★★  
 MATERNAL: ★★★★★ | CARCASS: ★★★



# G4 161



POLLED RED DOB: 10/22/2021 REG: C1172270

VFF NEW HORIZON 19/3 | MAVERICK 17/557  
 VFF ENFORCER 306E | VFF HONEY GIRL 43/8  
 VFF MS ADV 77-4 | VFF MR 16/2  
 009Y

LYSSY'S PINNACLE 92/465 | MAVERICK 17/557  
 OASIS II - CLONE 969  
 LYSSY 105/561 | JEWELLA 004 | RED RYDER 8035  
 COTTAGE 901

	CED	BW	WW	YW	MILK	SC	REA	%IMF	\$T	\$M	\$FE
EPD	4.8	-0.6	45.4	66.6	8.5	1.2	0	0.38	119.66	32.91	11.2
ACC	0.31	0.47	0.53	0.53	0.17	0.48	0.51	0.56			
%	20%	20%	10%	15%	70%	10%	80%	2%	10%	4%	75%

	BW	WW	YW	SC	REA	%IMF	RIB FAT	RUMP FT	RFI	\$P
RATIO	100	97	94	97	79	120	110	87		
CONT	1	2	2	2	2	2	2	2	-0.83	\$102.16
ADJ	78	814	1123	33.49	11.45	2.34	0.23	0.27		

CALVING EASE: ★★★ | DISP.: ★★★ | EFFICIENCY: ★★★★★  
 MATERNAL: ★★★★★ | CARCASS: ★★★★★



# G4 198



HORNS RED DOB: 3/26/2022 REG: C1157068

VFF ENFORCER 306E VFF NEW HORIZON 19/3  
LYSSY'S STAND ALONE 170 VFF MS ADV 77-4

G4 714 MAVERICK 17/557  
13-0

G4 926 VFF NEW HORIZON 19/3 MAVERICK 17/557  
VFF HONEY GIRL 43/8

G4 1246 3/0  
5-9

	CED	BW	WW	YW	MILK	SC	REA	%IMF	\$T	\$M	\$FE
EPD	5.1	-0.2	44.8	70.3	11.2	1.1	0.32	0.22	125.19	31.14	19.14
ACC	0.3	0.39	PE	PE	PE	PE	I	I			
%	20%	35%	10%	10%	20%	15%	45%	10%	5%	5%	20%

	BW	WW	YW	SC	REA	%IMF	RIB FAT	RUMP FT	RFI	\$P
RATIO	100	100	106	100	103	111	83	76		
CONT	1	1	5	1	5	5	5	5	-3.77	\$127.56
ADJ	79	697	1176	29.45	12.71	2.52	0.19	0.28		

CALVING EASE:	***	DISP.:	*****	EFFICIENCY:	*****
MATERNAL:	*****	CARCASS:	****		

# LOT #12



# LYSSYS 568



HORNS BLACK DOB: 3/24/22 REG: C1166103

MR CJ 1737 CJ'S LOVE MAKER 1420 CF DR. LOVE 414  
CJ'S DIAMOND REFLECTION 1203

101/1 TRIPLE THREAT 1503/7  
AMAZING ROSE 8032

LYSSY 108/591 LYSSY 105/764 0/137  
LYSSY 128/658

6 118/2  
202/1

	CED	BW	WW	YW	MILK	SC	REA	%IMF	\$T	\$M	\$FE
EPD	2.4	0.4	29.5	52.4	9.4	1.3	-0.04	0.02	91.58	19.47	18.52
ACC	0.32	0.53	0.52	0.52	0.21	0.38	0.52	0.57			
%	80%	55%	40%	35%	50%	4%	80%	45%	30%	35%	25%

	BW	WW	YW	SC	REA	%IMF	RIB FAT	RUMP FT	RFI	\$P
RATIO	97	104	99	97	98	97	110	112		
CONT	6	7	6	6	7	7	7	7	1.28	\$84.06
ADJ	78	685	1106	35.85	12.78	2.67	0.34	0.55		

CALVING EASE:	***	DISP.:	*****	EFFICIENCY:	**
MATERNAL:	*****	CARCASS:	****		



# LYSSYS 569



HORNS BLACK DOB: 3/1/22 REG: C1166104

MR CJ 1737 CJ'S LOVE MAKER 1420 CF DR. LOVE 414  
CJ'S DIAMOND REFLECTION 1203

101/1 TRIPLE THREAT 1503/7  
AMAZING ROSE 8032

LYSSY 15/530 NEW DESIGN 30/910 605  
MISS CF 591/4

12/5 293L54 LE  
SPARKY 15-7

	CED	BW	WW	YW	MILK	SC	REA	%IMF	\$T	\$M	\$FE
EPD	4.3	-0.1	36.6	55.4	9.2	1.2	-0.01	0.09	97.79	27.63	17.95
ACC	0.32	0.52	I	I	PE	I	I	I			
%	30%	35%	20%	30%	55%	10%	80%	30%	25%	10%	25%

	BW	WW	YW	SC	REA	%IMF	RIB FAT	RUMP FT	RFI	\$P
RATIO	100	101	100	100	87	126	110	108		
CONT	6	7	1	1	7	7	7	7	4.21	\$85.30
ADJ	75	667	1121	38.19	11.31	3.44	0.34	0.53		

CALVING EASE:	***	DISP.:	***	EFFICIENCY:	**
MATERNAL:	***	CARCASS:	*****		





# LYSSY 253



HORNS RED DOB: 10/5/21 REG: M11365

MR CJ 1737

CJ'S LOVE MAKER 1420 | CF DR. LOVE 414  
CJ'S DIAMOND REFLECTION 1203  
101/1 | TRIPLE THREAT 1503/7  
AMAZING ROSE 8032

198

MR TRINITY 533 |  
8393 | 386/1  
433/5

	CED	BW	WW	YW	MILK	SC	REA	%IMF	\$T	\$M	\$FE
EPD	2	0.6	35.3	58	7.9	1.5	0.67	0.19	103.76	22.72	17.92
ACC	0.32	0.5	0.51	0.49	0.16	0.48	0.47	0.54			
%	85%	60%	25%	25%	80%	2%	10%	15%	20%	25%	30%

	BW	WW	YW	SC	REA	%IMF	RIB FAT	RUMP FT	RFI	\$P
RATIO	91	101	103	104	107	94	88	81		
CONT	3	3	3	3	3	3	3	3	-0.96	\$108.17
ADJ	83	708	1185	41.64	16.11	2.89	0.28	0.39		

CALVING EASE: \*\*\* DISP.: \*\*\*\*\* EFFICIENCY: \*\*\*\*\*  
MATERNAL: \*\*\*\*\* CARCASS: \*\*\*\*

## 2C ADVANCER



# G4 166



POLLED RED DOB: 1/26/2022 REG: C1172269

VFF ENFORCER 306E

VFF NEW HORIZON 19/3 | MAVERICK 17/557  
VFF HONEY GIRL 43/8  
VFF MS ADV 77-4 | VFF MR 16/2  
009Y

LYSSY 105/561

LYSSY'S PINNACLE 92/465 | MAVERICK 17/557  
OASIS II - CLONE 969  
JEWELLA 004 | RED RYDER 8035  
COTTAGE 901

	CED	BW	WW	YW	MILK	SC	REA	%IMF	\$T	\$M	\$FE
EPD	5.8	-0.8	45.3	71.7	8.7	1.2	0.42	0.41	129.12	29.76	15.46
ACC	0.31	0.47	0.55	0.55	0.17	0.42	0.55	0.59			
%	10%	20%	10%	10%	65%	10%	30%	1%	4%	10%	45%

	BW	WW	YW	SC	REA	%IMF	RIB FAT	RUMP FT	RFI	\$P
RATIO	103	104	100	100	109	130	117	91		
CONT	6	3	1	1	4	4	4	4	2.05	\$74.16
ADJ	72	809	1369	35.48	15.94	3.49	0.28	0.29		

CALVING EASE: \*\*\* DISP.: \*\*\*\*\* EFFICIENCY: \*\*  
MATERNAL: \*\*\*\*\* CARCASS: \*\*\*\*\*



# G4 114



HORNS RED DOB: 9/25/2021 REG: C1172610

VFF ENFORCER 306E

VFF NEW HORIZON 19/3 | MAVERICK 17/557  
VFF HONEY GIRL 43/8  
VFF MS ADV 77-4 | VFF MR 16/2  
009Y

G4 762

LYSSY'S RED RAIDER 104/748 | LYSSY'S PINNACLE 92/465  
LYSSY 11/957  
G4 417 | 669/9  
G4 1230

	CED	BW	WW	YW	MILK	SC	REA	%IMF	\$T	\$M	\$FE
EPD	4	0.2	47.9	75.7	11.4	1.4	0.58	0.21	133.69	32.55	21.83
ACC	0.17	0.49	0.49	0.49	0.14	0.44	0.46	0.5			
%	40%	45%	4%	4%	20%	4%	15%	10%	3%	4%	10%

	BW	WW	YW	SC	REA	%IMF	RIB FAT	RUMP FT	RFI	\$P
RATIO	100	104	107	103	112	93	117	116		
CONT	8	6	4	4	3	3	3	3	-1.15	\$117.88
ADJ	78	676	1112	35.13	16.09	2.61	0.27	0.43		

CALVING EASE: \*\*\* DISP.: \*\*\*\*\* EFFICIENCY: \*\*\*\*\*  
MATERNAL: \*\*\*\*\* CARCASS: \*\*\*\*

## LOT #17





# LYSSY 760



SCURS DUN DOB: 11/9/21 REG: C1156393

LYSSY'S TONTO 26/96  
LYSSYS BIG CHIEF 98/143  
JEWELLA 004

LYSSY'S PINNACLE 92/465  
LYSSY 21/33  
RED RYDER 8035  
COTTAGE 901

30-0

RED RYDER 8035  
PANDORA 13/6  
BLACK BAYOU 1071/3  
EMS AMAZING ACE 630  
CJ'S SOUL MAN 168  
LADY V 579

EPD	CED	BW	WW	YW	MILK	SC	REA	%IMF	\$T	\$M	\$FE
3.6	3.6	0.2	50	67.8	9.6	1.1	0.51	0.43	121.86	38.39	5.01
ACC	0.31	0.43	0.42	0.41	0.18	0.36	0.38	0.42			
%	50%	50%	3%	10%	50%	10%	20%	1%	10%	2%	95%

RATIO	BW	WW	YW	SC	REA	%IMF	RIB FAT	RUMP FT	RFI	\$P
100	100	100	100	100	100	100	100	100	1.73	\$100.16
CONT	1	1	1	1	1	1	1	1		
ADJ	78	680	1075	37.4	13.39	2.58	0.21	0.38		

CALVING EASE:	***	DISP.:	*****	EFFICIENCY:	***
MATERNAL:	*****	CARCASS:	****		



# LYSSY 871



SCURS RED DOB: 2/22/2022 REG: C1166097

LYSSY'S TONTO 26/96  
LYSSYS BIG CHIEF 98/143  
JEWELLA 004

LYSSY'S PINNACLE 92/465  
LYSSY 21/33  
RED RYDER 8035  
COTTAGE 901

LYSSY 119/606

VFF ENFORCER 306E  
LYSSY 15/792  
VFF NEW HORIZON 19/3  
VFF MS ADV 77-4  
LYSSY'S PINNACLE 92/465  
JEWELLA 004

EPD	CED	BW	WW	YW	MILK	SC	REA	%IMF	\$T	\$M	\$FE
7.4	7.4	-2.3	43.2	57.1	10	1.3	0.15	0.51	104.45	39.85	2.02
ACC	0.32	0.51	0.48	0.48	0.12	0.36	0.48	0.54			
%	3%	2%	10%	25%	40%	5%	65%	1%	20%	1%	95%

RATIO	BW	WW	YW	SC	REA	%IMF	RIB FAT	RUMP FT	RFI	\$P
109	109	104	95	93	88	113	100	88	1.47	\$78.44
CONT	5	4	4	4	4	4	4	4		
ADJ	68	757	967	32.84	10.74	3.51	0.36	0.42		

CALVING EASE:	*****	DISP.:	*****	EFFICIENCY:	**
MATERNAL:	*****	CARCASS:	**		



# LYSSYS 572



HORNS RED DOB: 4/15/2022 REG: C1166090

VFF ENFORCER 306E  
LYSSY'S STAND ALONE 170  
G4 714

VFF NEW HORIZON 19/3  
VFF MS ADV 77-4  
MAVERICK 17/557  
13-0

LYSSY'S PINNACLE 92/465  
LYSSY 99/454

MAVERICK 17/557  
OASIS II - CLONE 969  
NEW DESIGN 30/910  
12/5

EPD	CED	BW	WW	YW	MILK	SC	REA	%IMF	\$T	\$M	\$FE
4.7	4.7	0.1	47	69.3	8.8	1.2	0.12	0.3	123.37	32.67	15.23
ACC	0.32	0.5	0.48	0.48	0.14	0.34	0.48	0.55			
%	25%	40%	5%	10%	65%	10%	65%	4%	10%	4%	45%

RATIO	BW	WW	YW	SC	REA	%IMF	RIB FAT	RUMP FT	RFI	\$P
104	104	98	108	101	110	118	122	105	3	\$102.01
CONT	5	5	5	5	5	5	5	5		
ADJ	70	682	1049	31.96	12.71	2.83	0.33	0.44		

CALVING EASE:	*****	DISP.:	****	EFFICIENCY:	**
MATERNAL:	***	CARCASS:	****		



# LYSSY 749



HORNS RED DOB: 9/2/2021 REG: C1162465

VFF ENFORCER 306E  
VFF NEW HORIZON 19/3  
VFF MS ADV 77-4

MAVERICK 17/557  
VFF HONEY GIRL 43/8  
VFF MR 16/2  
009Y

NG MS MCALESTER 1849G2  
MCALESTER 4521  
CHRK BLACK RUBY 1849X

J & K 1001  
95  
BLACK BAYOU 1071/3  
CHRK MISS REBA 1194/5

EPD	CED	BW	WW	YW	MILK	SC	REA	%IMF	\$T	\$M	\$FE
2.5	2.5	0.7	65.7	107.3	9.6	2.1	0.86	0.28	189.13	36.75	33.89
ACC	0.32	0.56	0.56	0.57	0.16	0.55	0.55	0.61			
%	75%	65%	1%	1%	45%	1%	4%	5%	1%	2%	1%

RATIO	BW	WW	YW	SC	REA	%IMF	RIB FAT	RUMP FT	RFI	\$P
96	96	101	110	106	103	144	83	89	-2.18	\$104.84
CONT	14	14	14	14	14	14	14	14		
ADJ	81	724	1191	36.97	14.71	2.54	0.2	0.31		

CALVING EASE:	***	DISP.:	****	EFFICIENCY:	****
MATERNAL:	*****	CARCASS:	****		



# CMR MD 2142



DEHORND RED DOB: 10/1/2021 REG: C1153116

**NG MAC DADDY 33F** MCALESTER 4521 | J & K 1001 95  
 CHRK 33Z | CHRK CODE RED 1690W  
 CHRK 1748W  
**WPR'S TILLY** WPR'S LEGENDMAKER 1410 | CF SUGAR BRITCHES 040  
 LASATER BEEFMASTER 3670  
 WPR'S LITTLE PISTOL 4101 | WPR'S KRYPTONITE 1208  
 WPR'S BABY'S PACKIN 119

	CED	BW	WW	YW	MILK	SC	REA	%IMF	\$T	\$M	\$FE
EPD	1.8	1.2	42.6	66.2	12.5	1.3	0.61	-0.02	115.52	30.98	15.29
ACC	0.31	0.5	0.42	0.4	0.15	0.33	0.37	0.41			
%	90%	80%	10%	15%	10%	4%	15%	55%	10%	5%	45%

	BW	WW	YW	SC	REA	%IMF	RIB FAT	RUMP FT	RFI	\$P
RATIO	96	100	100	100	100	100	100	100		
CONT	3	1	1	1	1	1	1	1	-2.09	\$116.32
ADJ	73	671	947	33.43	14.88	0.91	0.09	0.28		

CALVING EASE: ★★★      DISP.: ★★★★★      EFFICIENCY: ★★★★★  
 MATERNAL: ★★★★★      CARCASS: ★★

## LOT #22



# LYSSYS 260



HORNS RED DOB: 10/1/21 REG: C1162451

**MCK FLINT ROCK 142** SUMMIT 5306 | J & K 1001 714  
 198 | DOC 2D-0C81  
 SHE'S A ROSE 1198/5  
**CAIN 005Z** CF DREAM CATCHER 914 | L2 CAPTAIN SUGAR 12/02  
 OASIS 655  
 8005 | BLACK BAYOU 1071/3  
 6-69

	CED	BW	WW	YW	MILK	SC	REA	%IMF	\$T	\$M	\$FE
EPD	3.4	0.3	39.6	62.9	8.9	0.9	0.66	-0.05	109.55	25.58	13.58
ACC	0.32	0.54	0.56	0.55	0.22	0.53	0.54	0.59			
%	55%	50%	15%	15%	60%	20%	10%	65%	15%	15%	55%

	BW	WW	YW	SC	REA	%IMF	RIB FAT	RUMP FT	RFI	\$P
RATIO	94	102	101	100	118	62	61	100		
CONT	6	7	3	3	3	3	3	3	-1.71	\$101.02
ADJ	80	623	1010	34.43	14.07	1.17	0.11	0.36		

CALVING EASE: ★★★      DISP.: ★★★★★      EFFICIENCY: ★★★★★  
 MATERNAL: ★★★★★      CARCASS: ★★

## LOT #23



24

# G4 169

G4 RANCH

SCURS RED DOB: 1/13/2022 REG: C1172271

VFF NEW HORIZON 19/3  
**VFF ENFORCER 306E**  
 VFF MS ADV 77-4

MAVERICK 17/557  
 VFF HONEY GIRL 43/8  
 VFF MR 16/2  
 009Y

LYSSY'S PINNACLE 92/465  
**LYSSY 105/561**  
 JEWELLA 004

MAVERICK 17/557  
 OASIS II - CLONE 969  
 RED RYDER 8035  
 COTTAGE 901

	CED	BW	WW	YW	MILK	SC	REA	%IMF	\$T	\$M	\$FE
EPD	6.1	-1.2	39.3	63.6	9.2	1.1	0.15	0.4	114.7	27.5	13.72
ACC	0.31	0.47	0.55	0.55	0.17	0.42	0.55	0.59			
%	10%	10%	15%	15%	55%	10%	65%	2%	10%	10%	55%

	BW	WW	YW	SC	REA	%IMF	RIB FAT	RUMP FT	RFI	\$P
RATIO	103	101	108	105	95	122	115	100		
CONT	6	2	2	2	2	2	2	2	1.58	\$92.07
ADJ	72	776	1299	35.82	11.66	4.28	0.31	0.47		

CALVING EASE: ★★★      DISP.: ★★★★★      EFFICIENCY: ★★★  
 MATERNAL: ★★★★★      CARCASS: ★★★★★

25

# LYSSYS 785

LYSSY FL  
Beefmasters

HORNS RED DOB: 9/21/2021 REG: C1156381

LYSSY'S PINNACLE 92/465  
**LYSSY'S TONTO 26/96**  
 LYSSY 21/33

MAVERICK 17/557  
 OASIS II - CLONE 969  
 cf FRENCH CONNECTION 142  
 SIIRI 448/8

LYSSY 120/939  
**LYSSY 115/755**

MAVERICK 17/577  
 SHELTON 9020  
 MISS TABASCO 929/4  
 0/137  
 LYSSY 19/652

	CED	BW	WW	YW	MILK	SC	REA	%IMF	\$T	\$M	\$FE
EPD	5.4	-0.6	42.9	59.1	7.7	1.4	-0.06	-0.1	101.86	34.29	4.31
ACC	0.32	0.54	0.55	0.55	0.22	0.52	0.53	0.59			
%	15%	20%	10%	25%	80%	3%	85%	80%	20%	3%	95%

	BW	WW	YW	SC	REA	%IMF	RIB FAT	RUMP FT	RFI	\$P
RATIO	120	97	93	96	92	74	83	91		
CONT	10	10	7	7	7	7	7	7	0.48	\$100.01
ADJ	63	635	933	33.93	11.17	1	0.2	0.32		

CALVING EASE: ★★★★★      DISP.: ★★★★★      EFFICIENCY: ★★★  
 MATERNAL: ★★★★★      CARCASS: ★★

26

# LYSSYS 893

LYSSY FL  
Beefmasters

SCURS RED DOB: 3/12/2022 REG: C1171612

VFF ENFORCER 306E  
**LYSSY'S STAND ALONE 170**  
 G4 714

VFF NEW HORIZON 19/3  
 VFF MS ADV 77-4  
 MAVERICK 17/557  
 13-0

BULLET PROOF 864  
**SWB PURE PLEASURE 126/11**  
 MAGICAL PEARL 31/3

CJ'S BANDELERO 960  
 OASIS 655  
 BLACK MAGIC 120/97  
 92/145

	CED	BW	WW	YW	MILK	SC	REA	%IMF	\$T	\$M	\$FE
EPD	3.7	0.6	41.8	67.3	8.7	0.8	0.17	0.29	120.11	24.96	14.18
ACC	0.31	0.52	0.47	0.42	0.18	0.35	0.38	0.41			
%	45%	60%	10%	10%	65%	20%	60%	4%	10%	15%	50%

	BW	WW	YW	SC	REA	%IMF	RIB FAT	RUMP FT	RFI	\$P
RATIO	102	104	94	92	100	103	94	85		
CONT	3	3	2	2	2	2	2	2	1.83	\$98.58
ADJ	66	745	1036	29.75	13.44	3.28	0.29	0.45		

CALVING EASE: ★★★★★      DISP.: ★★★★★      EFFICIENCY: ★★★  
 MATERNAL: ★★★★★      CARCASS: ★★★★★

## LOT #26





# LYSSYS 896



SCURS RED DOB: 3/10/22 REG: C1171611

VFF ENFORCER 306E | VFF NEW HORIZON 19/3  
LYSSYS'S STAND ALONE 170 | VFF MS ADV 77-4  
G4 714 | MAVERICK 17/557  
13-0

BULLET PROOF 864 | CJ'S BANDELERO 960  
SWB PURE PLEASURE 126/11 | OASIS 655  
MAGICAL PEARL 31/3 | BLACK MAGIC 120/97  
92/145

EPD	CED	BW	WW	YW	MILK	SC	REA	%IMF	\$T	\$M	\$FE
3.4	3.4	0.5	35.1	71.1	8.3	1.1	0.11	0.3	126.57	13.43	22.66
ACC	0.31	0.51	I	I	PE	I	I	I			
%	55%	60%	25%	10%	70%	10%	70%	4%	5%	65%	10%

RATIO	BW	WW	YW	SC	REA	%IMF	RIB FAT	RUMP FT	RFI	\$P
101	101	92	106	108	100	97	107	113		
CONT	3	3	2	2	2	2	2	2	2.76	\$95.47
ADJ	67	653	1164	34.65	13.34	3.07	0.33	0.6		

CALVING EASE: ★★★★★ DISP.: ★★★ EFFICIENCY: ★★  
MATERNAL: ★★★★★ CARCASS: ★★★★★



# LYSSYS 578



SCURS RED DOB: 2/18/2022 REG: C1166096

LYSSYS'S TONTO 26/96 | LYSSYS'S PINNACLE 92/465  
LYSSYS BIG CHIEF 98/143 | LYSSYS 21/33  
JEWELLA 004 | RED RYDER 8035  
COTTAGE 901

VFF ENFORCER 306E | VFF NEW HORIZON 19/3  
LYSSYS 99/444 | VFF MS ADV 77-4  
LYSSYS 26/574 | LYSSYS'S PINNACLE 92/465  
LYSSYS 120/418

EPD	CED	BW	WW	YW	MILK	SC	REA	%IMF	\$T	\$M	\$FE
5.7	5.7	-0.9	51.9	75.1	9.4	1.4	0.48	0.38	133.86	38.61	11.22
ACC	0.32	0.51	0.49	0.49	0.12	0.35	0.49	0.55			
%	10%	15%	3%	5%	50%	3%	25%	2%	3%	2%	75%

RATIO	BW	WW	YW	SC	REA	%IMF	RIB FAT	RUMP FT	RFI	\$P
96	96	104	110	107	115	104	125	131		
CONT	5	4	4	4	4	4	4	4	0.64	\$87.20
ADJ	77	754	1112	37.64	14.02	3.23	0.45	0.63		

CALVING EASE: ★★★ DISP.: ★★★★★ EFFICIENCY: ★★  
MATERNAL: ★★★ CARCASS: ★★★★★



# CANNON 2-43



HORNS RED DOB: 1/30/22 REG: C1173120

BLACK BAYOU 1071/3 | POLLED MANDATE 404/5  
CHRK GENESIS 1500T | 2C46/8 LH  
CHRK MISS REBA 1194/5 | DOC 2D-0C81  
906/2

MAVERICK 17/577 | SHELTON 9020  
LYSSYS 107/130 | MISS TABASCO 929/4  
VFF MS 4/2 | RED RYDER 8035  
38/6

EPD	CED	BW	WW	YW	MILK	SC	REA	%IMF	\$T	\$M	\$FE
3.8	3.8	-0.4	37.6	57.9	11.9	1	0.3	0.14	102.63	29.84	9.34
ACC	0.32	0.54	0.54	0.54	0.31	0.41	0.54	0.58			
%	45%	25%	20%	25%	15%	15%	45%	20%	20%	10%	85%

RATIO	BW	WW	YW	SC	REA	%IMF	RIB FAT	RUMP FT	RFI	\$P
94	94	93	92	105	103	88	94	108		
CONT	4	4	4	4	4	4	4	4	-1.68	\$108.59
ADJ	78	556	1019	36.18	12.85	2.7	0.32	0.52		

CALVING EASE: ★★★ DISP.: ★★★★★ EFFICIENCY: ★★★★★  
MATERNAL: ★★★★★ CARCASS: ★★★

## LOT #29



30

**CANNON 2-44**



**HORNS RED DOB: 2/1/22 REG: C1173125**

**BLACK BAYOU 1071/3** | **POLLED MANDATE 404/5**  
**CHRK GENESIS 1500T** | 2C46/8 LH  
**CHRK MISS REBA 1194/5** | **DOC 2D-0C81**  
 906/2

**LYSSY 107/130** | **MAVERICK 17/577** | **SHELTON 9020**  
 MISS TABASCO 929/4  
**VFF MS 4/2** | **RED RYDER 8035**  
 38/6

	CED	BW	WW	YW	MILK	SC	REA	%IMF	\$T	\$M	\$FE
EPD	4.6	-0.7	40.6	62.1	12.8	1.1	0.14	0.1	109.75	32.92	10.31
ACC	0.32	0.54	0.54	0.54	0.31	0.41	0.54	0.58			
%	25%	20%	15%	20%	10%	10%	65%	25%	15%	4%	80%

	BW	WW	YW	SC	REA	%IMF	RIB FAT	RUMP FT	RFI	\$P
RATIO	111	97	96	100	95	97	56	119		
CONT	4	4	4	4	4	4	4	4	-0.34	\$98.45
ADJ	66	577	1058	34.28	11.78	2.99	0.19	0.57		

**CALVING EASE: ★★★** | **DISP.: ★★★★★** | **EFFICIENCY: ★★★**  
**MATERNAL: ★★★★★** | **CARCASS: ★★★★★**



31

**CANNON 2-40**



**HORNS RED DOB: 1/8/22 REG: C1173118**

**VFF NEW HORIZON 19/3** | **MAVERICK 17/557**  
**VFF ENFORCER 306E** | **VFF HONEY GIRL 43/8**  
**VFF MS ADV 77-4** | **VFF MR 16/2**  
 009Y

**LYSSY 96/872** | **VFF NEW HORIZON 19/3** | **MAVERICK 17/557**  
**VFF HONEY GIRL 43/8**  
**LYSSY 93/688** | **NEW DESIGN 30/910**  
**JEWELLA 004**

	CED	BW	WW	YW	MILK	SC	REA	%IMF	\$T	\$M	\$FE
EPD	5.5	-0.9	45.7	70.6	12.8	1.1	0.52	0.21	125.41	34.79	19.4
ACC	0.32	0.54	0.54	0.54	0.18	0.42	0.53	0.58			
%	15%	15%	10%	10%	10%	10%	20%	10%	5%	3%	20%

	BW	WW	YW	SC	REA	%IMF	RIB FAT	RUMP FT	RFI	\$P
RATIO	100	104	101	95	97	103	94	92		
CONT	4	4	4	4	4	4	4	4	-0.44	\$93.79
ADJ	73	620	1119	32.57	12.12	3.16	0.32	0.44		

**CALVING EASE: ★★★** | **DISP.: ★★★★★** | **EFFICIENCY: ★★★**  
**MATERNAL: ★★★★★** | **CARCASS: ★★★★★**

**LOT #31**



**32**

**LYSSYS 270**



SCURS BLACK DOB: 2/13/2022 REG: C1166101

MR CJ 1737

CJ'S LOVE MAKER 1420 | CF DR. LOVE 414  
 101/1 | CJ'S DIAMOND REFLECTION 1203  
 TRIPLE THREAT 1503/7  
 AMAZING ROSE 8032

LYSSY 107/133

VFF NEW HORIZON 19/3 | MAVERICK 17/557  
 VFF HONEY GIRL 43/8  
 JEWELLA 004 | RED RYDER 8035  
 COTTAGE 901

	CED	BW	WW	YW	MILK	SC	REA	%IMF	\$T	\$M	\$FE
EPD	5.1	-1	35.8	59.2	9	1.3	0.54	0.08	104.6	25.42	14.72
ACC	0.32	0.53	0.52	0.52	0.17	0.38	0.51	0.57			
%	20%	15%	20%	20%	60%	5%	20%	30%	20%	15%	50%

	BW	WW	YW	SC	REA	%IMF	RIB FAT	RUMP FT	RFI	\$P
RATIO	98	103	111	107	114	107	97	86		
CONT	6	7	6	6	7	7	7	7	0.08	\$102.42
ADJ	77	678	1234	39.38	14.82	2.93	0.3	0.42		

CALVING EASE:	***	DISP.:	*****	EFFICIENCY:	***
MATERNAL:	****	CARCASS:	****		

LOT #32



**33**

**LYSSY 272**



POLLED RED DOB: 1/28/22 REG: C1166093

LYSSYS BIG CHIEF 98/143

LYSSY'S TONTO 26/96 | LYSSY'S PINNACLE 92/465  
 LYSSY 21/33  
 JEWELLA 004 | RED RYDER 8035  
 COTTAGE 901

MINK'S TUSCANY 6-13

MINK'S SWAGGER 1-09 | ACE IN THE HOLE 70/3  
 BLAZE 0440  
 WO WILDFIRE 48-60 | SUGAR DADEE 182  
 WO 208/48-6

	CED	BW	WW	YW	MILK	SC	REA	%IMF	\$T	\$M	\$FE
EPD	7.2	-1.3	26.9	45.2	7.6	0.6	0.24	0.2	80.29	19.07	12.49
ACC	0.31	0.49	0.45	0.46	0.15	0.32	0.46	0.52			
%	3%	10%	50%	50%	80%	40%	55%	10%	45%	40%	65%

	BW	WW	YW	SC	REA	%IMF	RIB FAT	RUMP FT	RFI	\$P
RATIO	100	93	103	98	102	91	81	106		
CONT	5	4	4	4	4	4	4	4	0.23	\$98.91
ADJ	74	675	1040	34.58	12.37	2.84	0.29	0.51		

CALVING EASE:	****	DISP.:	*****	EFFICIENCY:	***
MATERNAL:	***	CARCASS:	*****		

**34**

**LYSSY 746**



HORNS RED DOB: 9/1/21 REG: C1162471

VFF ENFORCER 306E

VFF NEW HORIZON 19/3 | MAVERICK 17/557  
 VFF HONEY GIRL 43/8  
 VFF MS ADV 77-4 | VFF MR 16/2  
 009Y

NG MS MCALESTER 1849G2

MCALESTER 4521 | J & K 1001  
 95  
 CHRK BLACK RUBY 1849X | BLACK BAYOU 1071/3  
 CHRK MISS REBA 1194/5

	CED	BW	WW	YW	MILK	SC	REA	%IMF	\$T	\$M	\$FE
EPD	3.2	0.2	61.1	96.9	9.6	1.8	0.81	0.25	170.55	36.7	29.21
ACC	0.32	0.56	0.56	0.57	0.16	0.55	0.55	0.61			
%	60%	50%	1%	1%	50%	1%	5%	10%	1%	2%	2%

	BW	WW	YW	SC	REA	%IMF	RIB FAT	RUMP FT	RFI	\$P
RATIO	98	100	93	89	98	129	125	120		
CONT	14	14	14	14	14	14	14	14	0.04	\$94.68
ADJ	79	717	1004	30.92	14.02	2.27	0.3	0.42		

CALVING EASE:	***	DISP.:	****	EFFICIENCY:	***
MATERNAL:	*****	CARCASS:	***		



### LYSSY 747



POLLED RED DOB: 9/1/2021 REG: C1162470

VFF NEW HORIZON 19/3  
**VFF ENFORCER 306E**  
MAVERICK 17/557  
VFF HONEY GIRL 43/8  
VFF MS ADV 77-4  
VFF MR 16/2  
009Y

LYSSY 96/872  
VFF NEW HORIZON 19/3  
MAVERICK 17/557  
VFF HONEY GIRL 43/8  
LYSSY 93/688  
NEW DESIGN 30/910  
JEWELLA 004

	CED	BW	WW	YW	MILK	SC	REA	%IMF	\$T	\$M	\$FE
EPD	4.9	-0.4	50	80.4	11.4	1	0.7	0.16	141.72	32.23	23.81
ACC	0.32	0.55	0.56	0.56	0.18	0.54	0.55	0.6			
%	20%	30%	3%	3%	20%	15%	10%	15%	2%	4%	10%

	BW	WW	YW	SC	REA	%IMF	RIB FAT	RUMP FT	RFI	\$P
RATIO	101	101	109	95	114	61	83	77		
CONT	14	14	14	14	14	14	14	14	2.29	\$84.15
ADJ	77	722	1184	32.92	16.28	1.07	0.2	0.27		

CALVING EASE:	★★	DISP.:	★★★★	EFFICIENCY:	★★
MATERNAL:	★★★★	CARCASS:	★★		



### CANNON 1-20



HORNS RED DOB: 9/18/21 REG: C1173113

VFF NEW HORIZON 19/3  
**VFF ENFORCER 306E**  
MAVERICK 17/557  
VFF HONEY GIRL 43/8  
VFF MS ADV 77-4  
VFF MR 16/2  
009Y

TVR 1326  
DR. J 15/1  
INFINITY 120/96  
20/5  
PROVEN PRISSY 1053-1  
BULLET PROOF 864  
5065

	CED	BW	WW	YW	MILK	SC	REA	%IMF	\$T	\$M	\$FE
EPD	6.1	-0.8	37.6	63.1	10.6	1	0.12	0.42	114.21	25.99	20.07
ACC	0.32	0.54	0.55	0.53	0.17	0.51	0.51	0.57			
%	10%	20%	20%	15%	30%	15%	70%	1%	10%	15%	20%

	BW	WW	YW	SC	REA	%IMF	RIB FAT	RUMP FT	RFI	\$P
RATIO	125	111	99	103	95	105	54	64		
CONT	6	6	4	4	4	4	4	4	-1.68	\$107.57
ADJ	60	743	1101	33.78	12.18	2.97	0.2	0.27		

CALVING EASE:	★★★★	DISP.:	★★	EFFICIENCY:	★★★★
MATERNAL:	★★★★	CARCASS:	★★★★		



### LYSSY 786



HORNS RED DOB: 10/16/2021 REG: C1156379

LYSSY'S PINNACLE 92/465  
**LYSSY'S TONTO 26/96**  
MAVERICK 17/557  
OASIS II - CLONE 969  
LYSSY 21/33  
cf FRENCH CONNECTION 142  
SIIRI 448/8

LYSSY 26/848  
VFF RYDIN DIRTY 5/2  
RED RYDER 8035  
38/6  
LYSSY 92/639  
MAVERICK 17/557  
OASIS II - CLONE 969

	CED	BW	WW	YW	MILK	SC	REA	%IMF	\$T	\$M	\$FE
EPD	4.4	0	44.8	56.4	7.5	1.3	0.07	-0.16	95.88	37.22	2.22
ACC	0.32	0.54	0.54	0.54	0.18	0.52	0.53	0.59			
%	30%	40%	10%	25%	85%	5%	70%	90%	25%	2%	95%

	BW	WW	YW	SC	REA	%IMF	RIB FAT	RUMP FT	RFI	\$P
RATIO	100	98	100	94	93	73	113	94		
CONT	10	10	7	7	7	7	7	7	-4.82	\$115.87
ADJ	75	639	1012	33.19	11.28	0.99	0.27	0.33		

CALVING EASE:	★★★★	DISP.:	★★	EFFICIENCY:	★★★★
MATERNAL:	★★★★	CARCASS:	★★		



### LYSSY 767



SCURS RED DOB: 10/12/21 REG: C1156353

VFF NEW HORIZON 19/3  
**VFF ENFORCER 306E**  
MAVERICK 17/557  
VFF HONEY GIRL 43/8  
VFF MS ADV 77-4  
VFF MR 16/2  
009Y

LYSSY 16/847  
VFF RYDIN DIRTY 5/2  
RED RYDER 8035  
38/6  
LYSSY 31/971  
MAVERICK 17/557  
LYSSY 128/658

	CED	BW	WW	YW	MILK	SC	REA	%IMF	\$T	\$M	\$FE
EPD	2.6	0.7	52.4	75.9	11.7	1.8	0.32	0.22	134.25	39.51	19.1
ACC	0.32	0.53	0.55	0.54	0.19	0.52	0.53	0.59			
%	75%	65%	2%	4%	15%	1%	45%	10%	3%	1%	20%

	BW	WW	YW	SC	REA	%IMF	RIB FAT	RUMP FT	RFI	\$P
RATIO	97	108	103	111	96	104	110	106		
CONT	5	5	4	4	4	4	4	4	-1.87	\$112.20
ADJ	78	744	1022	39.99	13.22	1.72	0.22	0.35		

CALVING EASE:	★★	DISP.:	★★	EFFICIENCY:	★★★★
MATERNAL:	★★★★	CARCASS:	★★		





**G4 171**



SCURS RED DOB: 1/29/2022 REG: C1172254

**CHRK RASIN' CAIN 1780X** | **CHRK GENESIS 1500T**  
**CHRK RUGER RED LABEL 85A** | 720/0 LE  
 1241/5 | **CJ'S SOUL MAN 168**  
 515/7

**G4 602**

**VFF NEW HORIZON 19/3** | **MAVERICK 17/557**  
 3/9 | **VFF HONEY GIRL 43/8**  
 217/7  
 BCE 1001/6

	CED	BW	WW	YW	MILK	SC	REA	%IMF	\$T	\$M	\$FE
EPD	3.3	0.9	32.3	51.9	8.6	0.7	0.65	0.1	92.14	20.72	12.54
ACC	0.3	0.44	0.52	0.52	0.19	0.35	0.52	0.58			
%	55%	70%	30%	35%	65%	30%	10%	25%	30%	30%	65%

	BW	WW	YW	SC	REA	%IMF	RIB FAT	RUMP FT	RFI	\$P
RATIO	99	101	100	99	100	70	75	53		
CONT	6	3	1	3	4	4	4	4	-2.78	\$102.27
ADJ	75	799	1125	35.13	14.58	1.87	0.18	0.17		

<b>CALVING EASE:</b>	***	<b>DISP.:</b>	*****	<b>EFFICIENCY:</b>	*****
<b>MATERNAL:</b>	***	<b>CARCASS:</b>	***		

**LOT #39**



**G4 173**



DEHORND RED DOB: 1/24/2022 REG: C1182258

**CHRK RASIN' CAIN 1780X** | **CHRK GENESIS 1500T**  
**CHRK RUGER RED LABEL 85A** | 720/0 LE  
 1241/5 | **CJ'S SOUL MAN 168**  
 515/7

**G4 602**

**VFF NEW HORIZON 19/3** | **MAVERICK 17/557**  
 3/9 | **VFF HONEY GIRL 43/8**  
 217/7 LH  
 BCE 1001/6

	CED	BW	WW	YW	MILK	SC	REA	%IMF	\$T	\$M	\$FE
EPD	3.7	0.9	32.9	57.1	8.8	0.7	0.54	0.19	102	18.17	16.28
ACC	0.3	0.44	0.52	0.52	0.19	0.35	0.52	0.58			
%	45%	75%	30%	25%	65%	35%	20%	15%	20%	40%	35%

	BW	WW	YW	SC	REA	%IMF	RIB FAT	RUMP FT	RFI	\$P
RATIO	99	102	100	100	96	111	117	116		
CONT	6	3	1	3	4	4	4	4	1.04	\$95.53
ADJ	75	809	1345	35.37	14.07	2.99	0.28	0.37		

<b>CALVING EASE:</b>	***	<b>DISP.:</b>	*****	<b>EFFICIENCY:</b>	***
<b>MATERNAL:</b>	***	<b>CARCASS:</b>	*****		



**G4 176**



POLLED RED DOB: 1/29/2022 REG: C1172272

**VFF NEW HORIZON 19/3** | **MAVERICK 17/557**  
**VFF ENFORCER 306E** | **VFF HONEY GIRL 43/8**  
 VFF MS ADV 77-4 | **VFF MR 16/2**  
 009Y

**LYSSY'S PINNACLE 92/465** | **MAVERICK 17/557**  
**LYSSY 105/561** | **OASIS II - CLONE 969**  
**JEWELLA 004** | **RED RYDER 8035**  
**COTTAGE 901**

	CED	BW	WW	YW	MILK	SC	REA	%IMF	\$T	\$M	\$FE
EPD	5.8	-1.1	42.9	64.1	10.1	1.2	0.28	0.29	114.6	33.08	11.25
ACC	0.31	0.47	0.55	0.55	0.17	0.42	0.55	0.59			
%	10%	10%	10%	15%	40%	10%	50%	4%	10%	4%	75%

	BW	WW	YW	SC	REA	%IMF	RIB FAT	RUMP FT	RFI	\$P
RATIO	100	97	100	101	95	90	92	141		
CONT	6	3	1	3	4	4	4	4	2.4	\$87.34
ADJ	74	773	1178	35.63	13.85	2.42	0.22	0.45		

<b>CALVING EASE:</b>	***	<b>DISP.:</b>	*****	<b>EFFICIENCY:</b>	**
<b>MATERNAL:</b>	*****	<b>CARCASS:</b>	*****		



# LYSSYS 560



HORNS RED DOB: 10/24/2021 REG: C1162437

LYSSY'S TONTO 26/96  
LYSSYS BIG CHIEF 98/143  
JEWELLA 004

LYSSY'S PINNACLE 92/465  
LYSSY 21/33  
RED RYDER 8035  
COTTAGE 901

CF SUGAR BRITCHES 040  
EMS DREAMIN' BOUT SUGAR 5036  
EMS BUFF'S DREAMLADY 8057

L2 CAPTAIN SUGAR 12/02  
OASIS 655  
ACE IN THE HOLE 70/3  
EMS MISS BUFF 86-6

	CED	BW	WW	YW	MILK	SC	REA	%IMF	\$T	\$M	\$FE
EPD	5.7	-1	34.1	45.5	8	1.1	0.32	0.42	83.43	30.44	0.64
ACC	0.32	0.54	0.54	0.53	0.16	0.52	0.52	0.58			
%	15%	15%	25%	50%	75%	10%	45%	1%	40%	10%	95%

	BW	WW	YW	SC	REA	%IMF	RIB FAT	RUMP FT	RFI	\$P
RATIO	98	98	86	108	94	128	96	62		
CONT	17	16	15	15	15	15	15	15	-0.15	\$97.27
ADJ	77	741	939	37.60	13.25	2.78	0.23	0.24		

CALVING EASE:	★★★	DISP.:	★★★★★	EFFICIENCY:	★★★
MATERNAL:	★★★	CARCASS:	★★★★		



# LYSSYS 557



POLLED RED DOB: 10/16/2021 REG: C1168913

LYSSY'S TONTO 26/96  
LYSSYS BIG CHIEF 98/143  
JEWELLA 004

LYSSY'S PINNACLE 92/465  
LYSSY 21/33  
RED RYDER 8035  
COTTAGE 901

CF SUGAR BRITCHES 040  
EMS DREAMIN' BOUT SUGAR 5036  
EMS BUFF'S DREAMLADY 8057

L2 CAPTAIN SUGAR 12/02  
OASIS 655  
ACE IN THE HOLE 70/3  
EMS MISS BUFF 86-6

	CED	BW	WW	YW	MILK	SC	REA	%IMF	\$T	\$M	\$FE
EPD	6.5	-1	33.7	45.9	7.9	0.7	0.29	0.4	84.01	28.53	1.36
ACC	0.32	0.54	0.54	0.53	0.16	0.52	0.52	0.58			
%	10%	15%	30%	50%	80%	30%	45%	1%	40%	10%	95%

	BW	WW	YW	SC	REA	%IMF	RIB FAT	RUMP FT	RFI	\$P
RATIO	99	95	102	101	102	107	142	90		
CONT	17	16	15	15	15	15	15	15	2.21	\$89.64
ADJ	76	720	1111	35.19	14.31	2.34	0.34	0.35		

CALVING EASE:	★★★	DISP.:	★★★★★	EFFICIENCY:	★★
MATERNAL:	★★★	CARCASS:	★★★★		



# LYSSYS 555



HORNS RED DOB: 10/5/2021 REG: C1156390

MR CJ 1737

CJ'S LOVE MAKER 1420  
101/1

CF DR. LOVE 414  
CJ'S DIAMOND REFLECTION 1203  
TRIPLE THREAT 1503/7  
AMAZING ROSE 8032

LYSSY 15/531

HABANERO 31/951  
LYSSY 92/461

cf FRENCH CONNECTION 142  
MISS TABASCO 929/4  
MAVERICK 17/557  
OASIS II - CLONE 969

	CED	BW	WW	YW	MILK	SC	REA	%IMF	\$T	\$M	\$FE
EPD	5.1	-0.7	26.5	33	7.1	0.9	-0.06	-0.06	57.43	26.29	1.22
ACC	0.32	0.53	0.53	0.53	0.18	0.51	0.53	0.58			
%	20%	20%	50%	80%	85%	20%	85%	70%	80%	15%	95%

	BW	WW	YW	SC	REA	%IMF	RIB FAT	RUMP FT	RFI	\$P
RATIO	111	100	105	100	100	73	100	85		
CONT	6	6	2	2	2	2	2	2	0.1	\$105.98
ADJ	65	622	1010	34.64	11.76	1.25	0.25	0.39		

CALVING EASE:	★★★★★	DISP.:	★★★★★	EFFICIENCY:	★★★
MATERNAL:	★★★	CARCASS:	★★		



# LYSSY 276



POLLED RED DOB: 2/1/22 REG: C1166091

VFF ENFORCER 306E

VFF NEW HORIZON 19/3  
VFF MS ADV 77-4

MAVERICK 17/557  
VFF HONEY GIRL 43/8  
VFF MR 16/2  
009Y

LYSSY'S DOLLY 25/84

LYSSY'S PINNACLE 92/465  
MISS TABASCO 929/4

MAVERICK 17/557  
OASIS II - CLONE  
TABASCO 3018K10  
83/8

	CED	BW	WW	YW	MILK	SC	REA	%IMF	\$T	\$M	\$FE
EPD	4.9	0	37.5	36.1	10.2	0.6	-0.13	0.19	65.68	41.01	-5.71
ACC	0.32	0.53	I	I	PE	I	I	I			
%	20%	40%	20%	75%	35%	40%	90%	15%	65%	1%	95%

	BW	WW	YW	SC	REA	%IMF	RIB FAT	RUMP FT	RFI	\$P
RATIO	107	98	85	88	90	110	84	82		
CONT	5	7	6	6	7	7	7	7	4.74	\$73.53
ADJ	68	649	944	32.28	11.72	3.02	0.26	0.4		

CALVING EASE:	★★★	DISP.:	★★★★★	EFFICIENCY:	★★
MATERNAL:	★★★★	CARCASS:	★★★★★		

46

# LYSSY 255

LYSSY  
Beefmasters

HORNS RED DOB: 10/25/21 REG: C1162434

VFF NEW HORIZON 19/3  
VFF ENFORCER 306E

VFF MS ADV 77-4

MAVERICK 17/557  
VFF HONEY GIRL 43/8  
VFF MR 16/2  
009Y

LYSSY'S KARMA 113/54

RED RYDER 8035

SIIRI 448/8

BLACK BAYOU 1071/3  
EMS AMAZING ACE 630  
TABASCO 3018K10  
CLEMENTINE 293L23

	CED	BW	WW	YW	MILK	SC	REA	%IMF	\$T	\$M	\$FE
EPD	3.1	0.7	48.4	69.8	12.7	1.1	0.17	0.16	122.83	37.08	13.11
ACC	0.33	0.56	0.57	0.57	0.19	0.56	0.56	0.61			
%	60%	65%	4%	10%	10%	10%	60%	15%	10%	2%	60%

	BW	WW	YW	SC	REA	%IMF	RIB FAT	RUMP FT	RFI	\$P
RATIO	102	98	83	91	87	66	92	90		
CONT	17	16	15	15	15	15	15	15	0.4	\$90.89
ADJ	74	738	910	31.65	12.26	1.43	0.22	0.35		

CALVING EASE:	★★★★	DISP.:	★★★★★	EFFICIENCY:	★★
MATERNAL:	★★★★★	CARCASS:	★★		

# LOT #46



47

# LYSSY 810

LYSSY  
Beefmasters

HORNS RED DOB: 9/30/21 REG: C1156395

VFF NEW HORIZON 19/3  
VFF ENFORCER 306E

VFF MS ADV 77-4

MAVERICK 17/557  
VFF HONEY GIRL 43/8  
VFF MR 16/2  
009Y

LYSSY'S JADE 13/643

RED RYDER 8035

LYSSY 110/937

BLACK BAYOU 1071/3  
EMS AMAZING ACE 630  
MAVERICK 17/557  
LYSSY 117/819

	CED	BW	WW	YW	MILK	SC	REA	%IMF	\$T	\$M	\$FE
EPD	4.9	-1	43.3	64.9	13.9	1.4	0.12	0.22	115.62	37.17	13.12
ACC	0.32	0.54	0.55	0.55	0.2	0.53	0.53	0.59			
%	20%	15%	10%	15%	2%	3%	70%	10%	10%	2%	60%

	BW	WW	YW	SC	REA	%IMF	RIB FAT	RUMP FT	RFI	\$P
RATIO	98	110	95	100	100	89	128	119		
CONT	6	7	3	3	3	3	3	3	-0.18	\$106.17
ADJ	77	674	947	34.38	11.85	1.68	0.23	0.43		

CALVING EASE:	★★★★	DISP.:	★★★★★	EFFICIENCY:	★★★★
MATERNAL:	★★★★★	CARCASS:	★★		

48

# G4 128

G4 RANCH

DEHORND RED DOB: 1/6/2022 REG: C1172256

LYSSY 38/114

LYSSY'S TONTO 26/96

LYSSY 115/99

INFUSION 206/6

G4 1253

832

LYSSY'S PINNACLE 92/465  
LYSSY 21/33  
MAVERICK 17/557  
JEWELLA 004  
FUSION 578/3  
177  
MR CLEAN 229  
6

	CED	BW	WW	YW	MILK	SC	REA	%IMF	\$T	\$M	\$FE
EPD	3.1	0.6	39.9	59.6	13.3	0.9	0.4	0.04	104.19	31.81	8.7
ACC	0.32	0.5	PE	PE	PE	PE	I	I			
%	65%	60%	15%	20%	4%	20%	35%	40%	20%	5%	85%

	BW	WW	YW	SC	REA	%IMF	RIB FAT	RUMP FT	RFI	\$P
RATIO	100	100	108	100	116	79	100	81		
CONT	5	1	5	1	5	5	5	5	-1.13	\$114.42
ADJ	79	703	1197	33.47	14.29	1.8	0.23	0.3		

CALVING EASE:	★★★	DISP.:	★★★★★	EFFICIENCY:	★★★★★
MATERNAL:	★★★★	CARCASS:	★★★		

49

CMR 22/04



POLLED RED DOB: 2/18/2022 REG: C1158794

LYSSY'S TONTO 26/96

LYSSY'S PINNACLE  
MAVERICK 17/557  
OASIS II - CLONE 969  
LYSSY 21/33  
cf FRENCH CONNECTION 142  
SIIRI 448/8

LYSSY 103/685

MAVERICK 17/577  
SHELTON 9020  
MISS TABASCO 929/4  
JEWELLA 004  
RED RYDER 8035  
COTTAGE 901

	CED	BW	WW	YW	MILK	SC	REA	%IMF	\$T	\$M	\$FE
EPD	4.3	-0.3	47.9	66.9	9.9	1.5	0.09	0.06	116.63	38.03	-0.33
ACC	0.33	0.55	0.55	0.51	0.2	0.44	0.46	0.49			
%	35%	30%	5%	10%	45%	2%	70%	35%	10%	2%	95%

	BW	WW	YW	SC	REA	%IMF	RIB FAT	RUMP FT	RFI	\$P
RATIO	96	100	100	100	100	100	100	100		
CONT	2	1	1	1	1	1	1	1	-2.55	\$117.17
ADJ	74	675	1131	34.64	11.83	2.17	0.33	0.49		

CALVING EASE: ★★★ DISP.: ★★★★★ EFFICIENCY: ★★★★★  
MATERNAL: ★★★★★ CARCASS: ★★★

50

CANNON 2-53



POLLED RED DOB: 3/18/22 REG: C1173126

LYSSY 108/954

CHRK GENESIS 1500T  
BLACK BAYOU 107/3  
CHRK MISS REBA 1194/5  
LYSSY 103/685  
MAVERICK 17/557  
JEWELLA 004

LYSSY 107/130

MAVERICK 17/577  
SHELTON 9020  
MISS TABASCO 929/4  
VFF MS 4/2  
RED RYDER 8035  
38/6

	CED	BW	WW	YW	MILK	SC	REA	%IMF	\$T	\$M	\$FE
EPD	2.4	0.4	39.1	60.2	10.6	0.9	0.32	-0.03	104.35	28.15	7.15
ACC	0.3	0.41	0.49	0.5	0.19	0.36	0.5	0.56			
%	80%	55%	15%	20%	30%	15%	45%	60%	20%	10%	90%

	BW	WW	YW	SC	REA	%IMF	RIB FAT	RUMP FT	RFI	\$P
RATIO	100	100	100	100	100	100	100	100		
CONT	1	1	1	1	1	1	1	1	1.23	\$99.22
ADJ	83	612	999	34.05	13.05	2.18	0.28	0.3		

CALVING EASE: ★★★ DISP.: ★★★★★ EFFICIENCY: ★★★  
MATERNAL: ★★★★★ CARCASS: ★★★★★

51

LYSSY 756



SCURS RED DOB: 9/12/2021 REG: C1162454

VFF ENFORCER 306E

VFF NEW HORIZON 19/3  
MAVERICK 17/557  
VFF HONEY GIRL 43/8  
VFF MS ADV 77-4  
VFF MR 16/2  
009Y

LYSSY 96/872

VFF NEW HORIZON 19/3  
MAVERICK 17/557  
VFF HONEY GIRL 43/8  
LYSSY 93/688  
NEW DESIGN 30/910  
JEWELLA 004

	CED	BW	WW	YW	MILK	SC	REA	%IMF	\$T	\$M	\$FE
EPD	4.5	-0.5	48.6	70.4	12.3	1.2	0.58	0.17	124.93	38.53	16.81
ACC	0.32	0.55	0.56	0.56	0.18	0.54	0.55	0.6			
%	25%	25%	4%	10%	10%	10%	15%	15%	5%	2%	35%

	BW	WW	YW	SC	REA	%IMF	RIB FAT	RUMP FT	RFI	\$P
RATIO	102	97	84	93	91	61	46	46		
CONT	14	14	14	14	14	14	14	14	0.92	\$74.73
ADJ	76	695	907	32.48	12.98	1.07	0.11	0.16		

CALVING EASE: ★★★ DISP.: ★★★★★ EFFICIENCY: ★★  
MATERNAL: ★★★★★ CARCASS: ★★

LOT #50



52

**CANNON 2-45**



**HORNS RED DOB: 2/1/22 REG: C1173384**

**LOT #52**

**MAVERICK 17/557** SHELTON 9020  
**CANNON 8-16 MAXAMILLION** MISS TABASCO 929/4  
 LYSSY'S MARILYN 54/732 VFF RYDIN DIRTY 5/2  
 LYSSY 101/997

**CANNON UPG 9-71** LYSSY KOJO MAVERICK 17/557  
 CF 490/9  
**CANNON UPG 215** MULTIPLE SIRE  
 CANNON UPG 215

	CED	BW	WW	YW	MILK	SC	REA	%IMF	\$T	\$M	\$FE
EPD	4.3	-0.8	38.8	58.3	12.6	1	0.49	0.06	103.08	32.65	8.67
ACC	0.12	0.42	0.5	0.51	0.29	0.34	0.5	0.54			
%	35%	20%	15%	25%	10%	15%	25%	35%	20%	4%	85%

	BW	WW	YW	SC	REA	%IMF	RIB FAT	RUMP FT	RFI	\$P
RATIO	107	107	99	99	115	84	0.2	0.51		
CONT	8	8	6	6	6	6	6	6	-0.81	\$106.37
ADJ	71	693	1058	33.72	14.29	2.54	0.19	0.5		

<b>CALVING EASE:</b>	★★★★	<b>DISP.:</b>	★★★★★	<b>EFFICIENCY:</b>	★★★★
<b>MATERNAL:</b>	★★★★★	<b>CARCASS:</b>	★★★★		



53

**LYSSY 269**



**HORNS DUN DOB: 2/9/2022 REG: C1166100**

**MAVERICK 17/557** Shelton 9020 SALSA 94-403  
 MISS TABASCO 929/4 5130-2C LE  
 TABASCO 3018K10  
 83/8

**BF 1621** CF SUGAR BRITCHES 040 L2 CAPTAIN SUGAR 12/02  
 OASIS 655  
 RED TIGER LADY 94/06 PAINTED TIGER 3/390  
 DREAMLADY IN RED 7-192

	CED	BW	WW	YW	MILK	SC	REA	%IMF	\$T	\$M	\$FE
EPD	5.4	-0.8	22.7	36.2	9.4	0.6	-0.16	-0.45	58.55	20.1	4.5
ACC	0.18	0.51	0.51	0.51	0.3	0.35	0.49	0.54			
%	15%	20%	65%	75%	50%	40%	90%	95%	75%	35%	95%

	BW	WW	YW	SC	REA	%IMF	RIB FAT	RUMP FT	RFI	\$P
RATIO	105	100	103	104	90	33	58	71		
CONT	6	7	6	6	7	7	7	7	-1.81	\$102.68
ADJ	72	660	1141	38.18	11.75	0.91	0.18	0.35		

<b>CALVING EASE:</b>	★★★★★	<b>DISP.:</b>	★★★★★	<b>EFFICIENCY:</b>	★★★★
<b>MATERNAL:</b>	★★★★	<b>CARCASS:</b>	★★		



**54**

**LYSSYS 567**

**LYSSY**  
*Beefmasters*

**HORNS BLACK DOB: 3/7/2022 REG: C1166102**

**MR CJ 1737**

**CJ'S LOVE MAKER 1420** | CF DR. LOVE 414  
CJ'S DIAMOND REFLECTION 1203  
101/1 | TRIPLE THREAT 1503/7  
AMAZING ROSE 8032

**LYSSY 25/539**

**VFF RYDIN DIRTY 5/2** | RED RYDER 8035  
38/6  
**MISS TABASCO 929/4** | TABASCO 3018K10  
83/8

**LOT #54**



	CED	BW	WW	YW	MILK	SC	REA	%IMF	\$T	\$M	\$FE
EPD	2.8	0.4	31.2	35.1	8.1	1.3	0.17	0.17	63.23	31.99	1.98
ACC	0.32	0.53	0.52	0.53	0.2	0.39	0.52	0.57			
%	70%	55%	35%	75%	75%	4%	60%	15%	70%	4%	95%

	BW	WW	YW	SC	REA	%IMF	RIB FAT	RUMP FT	RFI	\$P
RATIO	105	95	95	104	104	122	148	159		
CONT	6	7	6	6	7	7	7	7	-0.37	\$98.56
ADJ	72	625	1061	38.49	13.59	3.35	0.46	0.78		

<b>CALVING EASE:</b>	★★★	<b>DISP.:</b>	★★★★★	<b>EFFICIENCY:</b>	★★★
<b>MATERNAL:</b>	★★★	<b>CARCASS:</b>	★★★★★		

**55**

**LYSSY 870**

**LYSSY**  
*Beefmasters*

**HORNS BLACK DOB: 2/9/2022 REG: C1166099**

**MR CJ 1737**

**CJ'S LOVE MAKER 1420** | CF DR. LOVE 414  
CJ'S DIAMOND REFLECTION 1203  
101/1 | TRIPLE THREAT 1503/7  
AMAZING ROSE 8032

**EMS BIG HUNKA LOVE 62**

**EMS JOHNNY CASH 632** | ACE IN THE HOLE 70/3  
EMS MISS BUFF 86-6  
**EMS BONFIRE'S BARBIE 192** | BONFIRE 8038  
EMS STYLISH JEZZY 849

	CED	BW	WW	YW	MILK	SC	REA	%IMF	\$T	\$M	\$FE
EPD	4.5	-0.8	27.1	47	9.1	1.2	0.66	0.02	83.03	20.81	13.6
ACC	0.32	0.54	0.53	0.54	0.17	0.41	0.53	0.58			
%	30%	20%	50%	45%	55%	10%	10%	45%	40%	30%	55%

	BW	WW	YW	SC	REA	%IMF	RIB FAT	RUMP FT	RFI	\$P
RATIO	97	100	107	101	118	105	94	82		
CONT	6	7	6	6	7	7	7	7	0.4	\$97.99
ADJ	78	664	1191	37.18	15.34	2.87	0.29	0.4		

<b>CALVING EASE:</b>	★★★	<b>DISP.:</b>	★★★★★	<b>EFFICIENCY:</b>	★★★
<b>MATERNAL:</b>	★★★	<b>CARCASS:</b>	★★★★		



56

**CANNON 1-36**



**HORNS BLACK DOB: 11/10/21 REG: P304589**

**CF DR. LOVE 414** SPARTACUS 86/653  
**CJ'S LOVE MAKER 1420** CF SEX PISTOL 818  
 CJ'S DIAMOND REFLECTION 1203 CF DREAM CATCHER 914  
 CJ'S DIAMOND OF SOUL 509

**TVR 1326** DR. J 15/1 INFINITY 120/96  
 20/5  
 PROVEN PRISSY 1053-1 BULLET PROOF 864  
 5065

	CED	BW	WW	YW	MILK	SC	REA	%IMF	\$T	\$M	\$FE
EPD	4.5	-0.4	29	44.3	10.9	0.7	-0.32	0	77.09	24.9	12.31
ACC	0.11	0.41	PE	PE	PE	PE	PE	PE			
%	30%	25%	40%	55%	25%	35%	95%	50%	50%	15%	65%

	BW	WW	YW	SC	REA	%IMF	RIB FAT	RUMP FT	RFI	\$P
RATIO	100	100	100	100	100	100	100	100		
CONT	1	1	1	1	1	1	1	1	-2.18	\$109.91
ADJ	74	591	943	31.45	10.38	0.91	0.22	0.24		

**CALVING EASE:** ★★★ **DISP.:** ★★★★★ **EFFICIENCY:** ★★★★★  
**MATERNAL:** ★★★★★ **CARCASS:** ★★

**LOT #56**



57

**S3 3102**



**POLLED BLACK DOB: 3/10/2022 REG: C1160002**

**VFF ENFORCER 306E** VFF NEW HORIZON 19/3  
**LYSSY'S CUSTOM MADE 646** VFF MS ADV 77-4  
 SWB PURE PLEASURE 126/11 BULLET PROOF 864  
 MAGICAL PEARL 31/3

**S3 1008** S3 DREAM SON 1015 DREAM ON 2013  
 SIDDONS 341  
 S3 BLACKIE 1210 MULTIPLE SIRE  
 6308

	CED	BW	WW	YW	MILK	SC	REA	%IMF	\$T	\$M	\$FE
EPD	2.7	0.7	41.6	62.3	11.7	1.1	-0.05	0.01	108.31	31.41	13.73
ACC	0.31	0.5	0.47	0.48	0.13	0.32	0.46	0.53			
%	75%	65%	10%	20%	15%	10%	85%	50%	15%	5%	55%

	BW	WW	YW	SC	REA	%IMF	RIB FAT	RUMP FT	RFI	\$P
RATIO	96	104	98	103	89	60	96	86		
CONT	7	7	6	6	5	5	5	5	1.47	\$93.09
ADJ	90	729	1055	37.65	11.21	1.29	0.23	0.37		

**CALVING EASE:** ★★ **DISP.:** ★★★★★ **EFFICIENCY:** ★★★  
**MATERNAL:** ★★★★★ **CARCASS:** ★★

58

**SA 321**



**POLLED RED DOB: 10/1/2021 REG: C1145751**

**VFF ENFORCER 306E** VFF NEW HORIZON 19/3  
 VFF MS ADV 77-4  
 MAVERICK 17/557  
 VFF HONEY GIRL 43/8  
 VFF MR 16/2  
 009Y

**SA SPARKLE 217** LYSSY 124/63 MAVERICK 17/557  
 219  
 2018 KARMA'S TIGER 25-1  
 5874

	CED	BW	WW	YW	MILK	SC	REA	%IMF	\$T	\$M	\$FE
EPD	3.2	0.4	45.4	73.7	12.2	1.2	0.23	0.28	131.02	30.52	21.92
ACC	0.3	0.38	PE	PE	PE	PE	PE	PE			
%	60%	55%	10%	5%	10%	10%	55%	4%	4%	10%	10%

	BW	WW	YW	SC	REA	%IMF	RIB FAT	RUMP FT	RFI	\$P
RATIO	100	100	100	100	100	100	100	100		
CONT	1	1	1	1	1	1	1	1	-1.1	\$107.68
ADJ	66	676	1165	40.43	12.92	3.17	0.23	0.34		

**CALVING EASE:** ★★★★★ **DISP.:** ★★★ **EFFICIENCY:** ★★★★★  
**MATERNAL:** ★★★★★ **CARCASS:** ★★★★★



# LYSSYS 187



POLLED RED DOB: 4/16/2022 REG: C1157064

LYSSY'S TONTO 26/96  
LYSSYS BIG CHIEF 98/143  
JEWELLA 004

LYSSY'S PINNACLE 92/465  
LYSSY 21/33  
RED RYDER 8035  
COTTAGE 901

LYSSY 99/187

MAVERICK 17/577  
SHELTON 9020  
MISS TABASCO 929/4  
VFF MS 4/2  
RED RYDER 8035  
38/6

	CED	BW	WW	YW	MILK	SC	REA	%IMF	\$T	\$M	\$FE
EPD	5.6	-1	42.1	56.2	9.5	1.2	0.4	0.15	99.22	36.43	0.88
ACC	0.32	0.49	I	I	PE	I	I	I			
%	15%	15%	10%	25%	50%	10%	30%	20%	20%	2%	95%

	BW	WW	YW	SC	REA	%IMF	RIB FAT	RUMP FT	RFI	\$P
RATIO	106	95	96	101	108	84	96	116		
CONT	4	3	3	2	3	3	3	3	-0.32	\$96.73
ADJ	74	729	1096	36.02	14.16	2.68	0.27	0.43		

CALVING EASE:	*****	DISP.:	*****	EFFICIENCY:	***
MATERNAL:	*****	CARCASS:	****		



# CK 2-27



HORNS DUN DOB: 2/23/2022 REG: C1173122

MAVERICK 17/557  
CANNON 8-16 MAXAMILLION  
LYSSY'S MARILYN 54/732

SHELTON 9020  
MISS TABASCO 929/4  
VFF RYDIN DIRTY 5/2  
LYSSY 101/997

ENSOR 911

6323  
LYSSY 112/458  
FRENZEL 989  
ENSOR 411  
DOCE DOCE 1212  
1110

	CED	BW	WW	YW	MILK	SC	REA	%IMF	\$T	\$M	\$FE
EPD	3.9	0.4	37.1	54.4	8.3	0.7	0.34	-0.14	93.73	26.43	10.41
ACC	0.16	0.47	0.46	0.45	0.13	0.27	0.44	0.5			
%	40%	55%	20%	30%	70%	30%	40%	90%	30%	15%	80%

	BW	WW	YW	SC	REA	%IMF	RIB FAT	RUMP FT	RFI	\$P
RATIO	96	101	98	96	100	74	0.22	0.48		
CONT	8	8	6	6	6	6	6	6	-1.13	\$113.44
ADJ	79	659	1056	31.89	12.78	2.24	0.22	0.48		

CALVING EASE:	***	DISP.:	*****	EFFICIENCY:	*****
MATERNAL:	*****	CARCASS:	****		



# BFTX 120



HORNS DUN DOB: 1/17/22 REG: C1151406

BFTX 04

LYSSY'S TONTO 26/96  
LYSSY 105/91

LYSSY'S PINNACLE 92/465  
LYSSY 21/33  
OBG TICKLE 280  
MISS TABASCO 929/4

LYSSY, A6S RONA 119/123  
LYSSY'S MARILYN 54/732

MAVERICK 17/577  
SHELTON 9020  
MISS TABASCO 929/4  
VFF RYDIN DIRTY 5/2  
LYSSY 101/997

	CED	BW	WW	YW	MILK	SC	REA	%IMF	\$T	\$M	\$FE
EPD	5.2	-0.7	32.7	43.8	9.3	1	0.03	-0.07	76.28	30.13	2.64
ACC	0.31	0.4	PE	PE	PE	PE	I	I			
%	15%	20%	30%	55%	55%	15%	75%	70%	50%	10%	95%

	BW	WW	YW	SC	REA	%IMF	RIB FAT	RUMP FT	RFI	\$P
RATIO	104	100	100	100	100	100	100	100		
CONT	2	1	1	1	1	1	1	1	-2.19	\$111.64
ADJ	69	801	1018	37.02	15.7	2.5	0.16	0.27		

CALVING EASE:	***	DISP.:	*****	EFFICIENCY:	*****
MATERNAL:	*****	CARCASS:	****		



# LYSSY 752



HORNS RED DOB: 9/5/2021 REG: C1162459

MR CJ 1737

CJ'S LOVE MAKER 1420  
101/1

CF DR. LOVE 414  
CJ'S DIAMOND REFLECTION 1203  
TRIPLE THREAT 1503/7  
AMAZING ROSE 8032

EMS BIG HUNKA LOVE  
EMS JOHNNY CASH 632  
EMS BONFIRE'S BARBIE 192

ACE IN THE HOLE 70/3  
EMS MISS BUFF 86-6  
BONFIRE 8038  
EMS STYLISH JEZZY 849

	CED	BW	WW	YW	MILK	SC	REA	%IMF	\$T	\$M	\$FE
EPD	3.6	-0.3	36.2	56.3	10.1	1.5	0.65	-0.16	97.26	28.39	13.85
ACC	0.32	0.55	0.55	0.55	0.17	0.53	0.54	0.6			
%	50%	30%	20%	25%	40%	2%	10%	90%	25%	10%	55%

	BW	WW	YW	SC	REA	%IMF	RIB FAT	RUMP FT	RFI	\$P
RATIO	93	101	110	110	114	67	83	94		
CONT	14	14	14	14	14	14	14	14	-3.71	\$114.88
ADJ	83	721	1188	38.12	16.24	1.17	0.2	0.33		

CALVING EASE:	***	DISP.:	*****	EFFICIENCY:	*****
MATERNAL:	***	CARCASS:	**		





# LYSSY 753



HORNS RED DOB: 9/5/21 REG: C1162460

MR CJ 1737

CJ'S LOVE MAKER 1420 | CF DR. LOVE 414  
CJ'S DIAMOND REFLECTION 1203  
101/1 | TRIPLE THREAT 1503/7  
AMAZING ROSE 8032

EMS JOHNNY CASH 632  
EMS BIG HUNKA LOVE 62

ACE IN THE HOLE 70/3  
EMS MISS BUFF 86-6  
BONFIRE 8038  
EMS STYLISH JEZZY 849

EMS BONFIRE'S BARBIE 192

EPD	CED	BW	WW	YW	MILK	SC	REA	%IMF	\$T	\$M	\$FE
4	-0.9	31.2	46.4	10.3	1.6	0.55	-0.06	80.79	29.07	9.89	
ACC	0.32	0.55	0.55	0.17	0.53	0.54	0.6				
%	40%	15%	35%	50%	35%	1%	20%	70%	45%	10%	80%

RATIO	BW	WW	YW	SC	REA	%IMF	RIB FAT	RUMP FT	RFI	\$P
91	91	99	89	104	92	60	75	83		
CONT	14	14	14	14	14	14	14	14	1.61	\$87.72
ADJ	85	705	969	36.12	13.08	1.05	0.18	0.29		

CALVING EASE:	***	DISP.:	*****	EFFICIENCY:	**
MATERNAL:	***	CARCASS:	**		



# S3 3152



DEHORND RED DOB: 3/15/2022 REG: C1160004

LYSSY'S CUSTOM MADE 646

VFF ENFORCER 306E | VFF NEW HORIZON 19/3  
SWB PURE PLEASURE 126/11 | VFF MS ADV 77-4  
BULLET PROOF 864  
MAGICAL PEARL 31/3

LYSSY 55/790

VFF RYDIN DIRTY 5/2 | RED RYDER 8035  
38/6  
LYSSY 120/939 | MAVERICK 17/557  
LYSSY 115/557

EPD	CED	BW	WW	YW	MILK	SC	REA	%IMF	\$T	\$M	\$FE
2.4	1	41.7	63.1	8.7	1.1	0.11	0.17	111.62	27.66	14.9	
ACC	0.32	0.52	0.49	0.5	0.17	0.34	0.5	0.56			
%	80%	75%	10%	15%	65%	10%	70%	15%	15%	10%	45%

RATIO	BW	WW	YW	SC	REA	%IMF	RIB FAT	RUMP FT	RFI	\$P
98	98	100	101	91	97	107	100	88		
CONT	7	7	6	6	5	5	5	5	1.7	\$104.99
ADJ	88	696	1090	33.40	12.19	2.3	0.24	0.38		

CALVING EASE:	***	DISP.:	*****	EFFICIENCY:	***
MATERNAL:	****	CARCASS:	****		



# CMR GC 2149



POLLED BLACK DOB: 11/4/2021 REG: C1158777

CJ'S GAME CHANGER 1316

CJ'S JUSTICE J100 | BLACK GOLD 27  
CJ'S DARK SECRET 01-8  
BRINDLE BABY OF SOUL | CJ'S SOUL MAN 168  
TIGER BABY 684

LYSSY 103/685

MAVERICK 17/577 | SHELTON 9020  
MISS TABASCO 929/4  
JEWELLA 004 | RED RYDER 8035  
COTTAGE 901

EPD	CED	BW	WW	YW	MILK	SC	REA	%IMF	\$T	\$M	\$FE
7.5	-2.4	47	77.8	9.7	1.4	0.29	0.38	139.14	32.03	8.5	
ACC	0.32	0.54	0.55	0.55	0.26	0.52	0.53	0.56			
%	3%	2%	5%	4%	45%	3%	45%	2%	2%	4%	85%

RATIO	BW	WW	YW	SC	REA	%IMF	RIB FAT	RUMP FT	RFI	\$P
113	113	87	86	89	100	114	83	79		
CONT	2	2	2	2	2	2	2	2	0	\$96.21
ADJ	65	637	945	31.65	13.89	3.43	0.25	0.26		

CALVING EASE:	*****	DISP.:	*****	EFFICIENCY:	***
MATERNAL:	*****	CARCASS:	*****		



# LYSSY 755



HORNS BLACK DOB: 9/7/21 REG: C1162457

MR CJ 1737

CJ'S LOVE MAKER 1420 | CF DR. LOVE 414  
CJ'S DIAMOND REFLECTION 1203  
101/1 | TRIPLE THREAT 1503/7  
AMAZING ROSE 8032

EMS BIG HUNKA LOVE 62

EMS JOHNNY CASH 632 | ACE IN THE HOLE 70/3  
EMS MISS BUFF 86-6  
EMS BONFIRE'S BARBIE 192 | BONFIRE 8038  
EMS STYLISH JEZZY 849

EPD	CED	BW	WW	YW	MILK	SC	REA	%IMF	\$T	\$M	\$FE
4.7	-0.9	32.9	50.2	9.4	1.7	0.58	-0.01	88.1	28.46	11.55	
ACC	0.32	0.55	0.55	0.55	0.17	0.53	0.54	0.6			
%	25%	15%	30%	40%	50%	1%	15%	55%	35%	10%	70%

RATIO	BW	WW	YW	SC	REA	%IMF	RIB FAT	RUMP FT	RFI	\$P
98	98	100	95	107	96	94	83	94		
CONT	14	14	14	14	14	14	14	14	-1.33	\$98.69
ADJ	79	715	1034	37.22	13.79	1.65	0.2	0.33		

CALVING EASE:	***	DISP.:	*****	EFFICIENCY:	***
MATERNAL:	***	CARCASS:	**		



# LYSSY 768



HORNS RED DOB: 10/13/2021 REG: C1156354

VFF NEW HORIZON 19/3  
VFF ENFORCER 306E  
VFF MS ADV 77-4

MAVERICK 17/557  
VFF HONEY GIRL 43/8  
VFF MR 16/2  
009Y

LYSSY'S PINNACLE 92/465  
LYSSY 15/793  
JEWELLA 004

MAVERICK 17/557  
OASIS II - CLONE 969  
RED RYDER 8035  
COTTAGE 901

EPD	CED	BW	WW	YW	MILK	SC	REA	%IMF	\$T	\$M	\$FE
4.6	-0.4	45.9	63.9	9.6	1.2	0.52	0.36	115.1	36.15	8.65	
ACC	0.32	0.54	0.55	0.55	0.19	0.53	0.54	0.59			
%	25%	30%	10%	15%	50%	10%	20%	2%	10%	2%	85%

RATIO	BW	WW	YW	SC	REA	%IMF	RIB FAT	RUMP FT	RFI	\$P
105	105	100	103	100	109	61	135	124		
CONT	5	5	4	4	4	4	4	4	-3.78	\$132.52
ADJ	72	694	1022	36.04	15.04	1.02	0.27	0.41		

CALVING EASE: ★★★★★    DISP.: ★★★    EFFICIENCY: ★★★★★  
 MATERNAL: ★★★★★    CARCASS: ★★



# CANNON 2-55



HORNS RED DOB: 3/29/22 REG: C1173124

CANNON 8-16 MAXAMILLION  
LYSSY'S MARILYN 54/732

MAVERICK 17/557  
SHELTON 9020  
MISS TABASCO 929/4  
VFF RYDIN DIRTY 5/2  
LYSSY 101/997

CANNON 8-23  
JACKSON 795  
CASEY 3-160

L2 MAX L2139/09  
OASIS 655  
MULTIPLE SIRE  
7-20

EPD	CED	BW	WW	YW	MILK	SC	REA	%IMF	\$T	\$M	\$FE
6	-0.7	30.1	45.1	6.7	0.8	0.19	0.21	81.13	22.82	9.05	
ACC	0.32	0.51	0.5	0.5	0.16	0.36	0.49	0.56			
%	10%	20%	40%	50%	90%	20%	60%	10%	40%	25%	85%

RATIO	BW	WW	YW	SC	REA	%IMF	RIB FAT	RUMP FT	RFI	\$P
100	100	100	97	97	112	116	133	165		
CONT	8	8	6	6	6	6	6	6	-0.07	\$106.37
ADJ	76	651	1044	32.61	14.28	3.5	0.32	0.76		

CALVING EASE: ★★★    DISP.: ★★★★★    EFFICIENCY: ★★★★★  
 MATERNAL: ★★★★★    CARCASS: ★★★★★



# CANNON 2-47



HORNS RED DOB: 2/10/22 REG: C1173121

CANNON 8-16 MAXAMILLION  
LYSSY'S MARILYN 54/732

SHELTON 9020  
MISS TABASCO 929/4  
VFF RYDIN DIRTY 5/2  
LYSSY 101/997

ROCKY CREEK 9170  
4G1615  
PINE SPRINGS 353

DOUBLE L 7008  
4G1106  
LASATER 7015  
H229

EPD	CED	BW	WW	YW	MILK	SC	REA	%IMF	\$T	\$M	\$FE
2.8	0.9	42.6	67.1	9.2	1	0.55	0.08	118.27	26.52	15.82	
ACC	0.32	0.51	0.51	0.49	0.17	0.35	0.49	0.55			
%	70%	75%	10%	10%	55%	15%	20%	30%	10%	15%	40%

RATIO	BW	WW	YW	SC	REA	%IMF	RIB FAT	RUMP FT	RFI	\$P
94	94	112	111	106	108	113	108	85		
CONT	8	8	6	6	6	6	6	6	-4.06	\$128.19
ADJ	81	725	1190	35.23	13.8	3.4	0.26	0.39		

CALVING EASE: ★★    DISP.: ★★★★★    EFFICIENCY: ★★★★★  
 MATERNAL: ★★    CARCASS: ★★★★★



# LYSSY 888



HORNS DUN DOB: 1/29/22 REG: C1166088

LYSSY'S TONTO 26/96  
LYSSY 21/33

LYSSY'S PINNACLE 92/465  
MAVERICK 17/557  
OASIS II - CLONE 969  
cf FRENCH CONNECTION 142  
SIIRI 448/8

LYSSY 124/766  
MAVERICK 17/577  
54 4/9

SHELTON 9020  
MISS TABASCO 929/4  
PAINTED TIGER 3/390  
CLEMENTINE 293L23

EPD	CED	BW	WW	YW	MILK	SC	REA	%IMF	\$T	\$M	\$FE
4.2	-0.1	42.4	57.3	9.2	1.4	0.07	-0.09	98.97	35.32	2.59	
ACC	0.32	0.52	0.52	0.52	0.2	0.4	0.51	0.56			
%	35%	35%	10%	25%	55%	3%	70%	80%	25%	3%	95%

RATIO	BW	WW	YW	SC	REA	%IMF	RIB FAT	RUMP FT	RFI	\$P
100	100	96	101	100	98	87	85	100		
CONT	5	5	5	5	5	5	5	5	-1.08	\$99.58
ADJ	73	670	983	31.63	11.28	2.09	0.23	0.42		

CALVING EASE: ★★★★★    DISP.: ★★★    EFFICIENCY: ★★  
 MATERNAL: ★★★★★    CARCASS: ★★



# LYSSYS 751



HORNS RED DOB: 9/2/21 REG: C1162463

MR CJ 1737

CJ'S LOVE MAKER 1420  
101/1  
CF DR. LOVE 414  
CJ'S DIAMOND REFLECTION 1203  
TRIPLE THREAT 1503/7  
AMAZING ROSE 8032

LYSSY 11/952

MAVERICK 17/577  
902  
SHELTON 9020  
MISS TABASCO 929/4  
CF SUGAR BRITCHES 040  
835

EPD	CED	BW	WW	YW	MILK	SC	REA	%IMF	\$T	\$M	\$FE
5.4	-1.5	21.3	28.6	8.7	1.2	-0.09	-0.01	49.89	25.16	0.32	
0.32	0.32	0.55	0.55	0.56	0.2	0.54	0.54	0.6			
15%	15%	10%	70%	90%	65%	10%	85%	55%	90%	15%	95%

RATIO	BW	WW	YW	SC	REA	%IMF	RIB FAT	RUMP FT	RFI	\$P
103	103	95	87	102	77	85	113	149		
14	14	14	14	14	14	14	14	14	1.63	\$94.99
75	75	678	945	35.47	10.97	1.5	0.27	0.52		

CALVING EASE:	***	DISP.:	*****	EFFICIENCY:	**
MATERNAL:	***	CARCASS:	**		



# LYSSYS 789



POLLED RED DOB: 10/20/21 REG: C1162442

VFF ENFORCER 306E

LYSSY 103/685

VFF NEW HORIZON 19/3  
VFF MS ADV 77-4  
MAVERICK 17/577  
JEWELLA 004  
SHELTON 9020  
MISS TABASCO 929/4  
RED RYDER 8035  
COTTAGE 901

EPD	CED	BW	WW	YW	MILK	SC	REA	%IMF	\$T	\$M	\$FE
5.5	-1.2	48.3	75.5	12	1.7	0.21	0.28	133.86	36.68	12.77	
0.32	0.32	0.57	0.58	0.58	0.2	0.56	0.57	0.61			
15%	15%	10%	4%	5%	15%	1%	60%	4%	3%	2%	60%

RATIO	BW	WW	YW	SC	REA	%IMF	RIB FAT	RUMP FT	RFI	\$P
101	101	96	96	107	102	78	96	97		
17	17	16	15	15	15	15	15	15	3.9	\$76.91
75	75	724	1044	37.39	14.28	1.7	0.23	0.38		

CALVING EASE:	***	DISP.:	*****	EFFICIENCY:	**
MATERNAL:	*****	CARCASS:	**		



# CANNON 1-25



HORNS RED DOB: 9/23/21 REG: C1173115

CANNON 8-16 MAXAMILLION

CASEY 4-130

MAVERICK 17/557  
LYSSY'S MARILYN 54/732  
SHELTON 9020  
MISS TABASCO 929/4  
VFF RYDIN DIRTY 5/2  
LYSSY 101/997

MULTIPLE SIRE  
9-54 3-30

EPD	CED	BW	WW	YW	MILK	SC	REA	%IMF	\$T	\$M	\$FE
2.1	2.1	1.5	40.5	64.5	8.4	0.6	0.7	0.26	115.48	22.81	17.05
0.16	0.16	0.47	0.47	0.46	0.16	0.42	0.45	0.5			
85%	85%	90%	15%	15%	70%	40%	10%	5%	10%	25%	35%

RATIO	BW	WW	YW	SC	REA	%IMF	RIB FAT	RUMP FT	RFI	\$P
91	91	116	111	98	114	135	129	105		
6	6	6	4	4	4	4	4	4	-5.73	\$137.07
80	80	627	1019	30.03	13.95	3.45	0.27	0.4		

CALVING EASE:	***	DISP.:	****	EFFICIENCY:	****
MATERNAL:	*****	CARCASS:	*****		



# CANNON 1-31



HORNS RED DOB: 10/16/21 REG: C1173117

CANNON 8-16 MAXAMILLION

CASEY 3-124

MAVERICK 17/557  
LYSSY'S MARILYN 54/732  
SHELTON 9020  
MISS TABASCO 929/4  
VFF RYDIN DIRTY 5/2  
LYSSY 101/997

MULTIPLE SIRE  
CASEY 0-128 6-79

EPD	CED	BW	WW	YW	MILK	SC	REA	%IMF	\$T	\$M	\$FE
2.7	2.7	0.6	30.2	48.4	8.3	0.3	0.1	0.09	85.58	19.02	12.4
0.16	0.16	0.47	0.47	0.46	0.17	0.42	0.44	0.5			
70%	70%	60%	40%	45%	70%	65%	70%	30%	35%	40%	65%

RATIO	BW	WW	YW	SC	REA	%IMF	RIB FAT	RUMP FT	RFI	\$P
91	91	108	100	95	89	105	100	103		
6	6	6	4	4	4	4	4	4	-1.61	\$106.25
80	80	584	923	29.19	10.89	2.67	0.21	0.39		

CALVING EASE:	***	DISP.:	****	EFFICIENCY:	****
MATERNAL:	****	CARCASS:	***		



S3 3302



POLLED RED DOB: 3/30/2022 REG: C1160007

VFF ENFORCER 306E | VFF NEW HORIZON 19/3  
LYSSY'S CUSTOM MADE 646 | VFF MS ADV 77-4  
SWB PURE PLEASURE 126/11 | BULLET PROOF 864  
MAGICAL PEARL 31/3

S3 9148 | VFF NEW HORIZON 19/3 | MAVERICK 17/557  
LYSSY 35/782 | VFF HONEY GIRL 43/8  
VFF RYDIN DIRTY 5/2  
LYSSY 101/998

	CED	BW	WW	YW	MILK	SC	REA	%IMF	\$T	\$M	\$FE
EPD	4.4	-0.1	39.3	62.1	9	1.2	0.22	0.23	110.62	26.85	15.54
ACC	0.31	0.51	0.49	0.49	0.15	0.33	0.48	0.54			
%	30%	40%	15%	20%	60%	10%	55%	10%	15%	15%	40%

	BW	WW	YW	SC	REA	%IMF	RIB FAT	RUMP FT	RFI	\$P
RATIO	110	93	95	99	100	100	100	100		
CONT	7	7	6	6	1	1	1	1	0.62	\$107.93
ADJ	78	652	1019	36.16	13.06	2.17	0.25	0.41		

CALVING EASE: \*\*\* DISP.: \*\*\*\*\* EFFICIENCY: \*\*\*\*\*  
MATERNAL: \*\*\*\*\* CARCASS: \*\*\*\*



G4 158



HORNS RED DOB: 2/28/2022 REG: C1172255

LYSSY 38/114 | LYSSY'S TONTO 26/96 | LYSSY'S PINNACLE 92/465  
LYSSY 115/99 | MAVERICK 17/557  
JEWELLA 004

G4 759 | LYSSY'S RED RAIDER 104/748 | LYSSY'S PINNACLE 92/465  
G4 458 | VISION 905  
8100

	CED	BW	WW	YW	MILK	SC	REA	%IMF	\$T	\$M	\$FE
EPD	4.9	-0.5	31.9	42.4	9.8	0.9	-0.12	0.2	75.97	29.75	1.63
ACC	0.16	0.45	PE	PE	PE	PE	I	I			
%	20%	25%	35%	60%	45%	20%	90%	10%	50%	10%	95%

	BW	WW	YW	SC	REA	%IMF	RIB FAT	RUMP FT	RFI	\$P
RATIO	100	98	89	97	87	120	139	132		
CONT	9	2	5	2	5	5	5	5	-2.13	\$102.09
ADJ	78	638	988	32.14	10.81	2.74	0.32	0.49		

CALVING EASE: \*\*\*\*\* DISP.: \*\*\*\*\* EFFICIENCY: \*\*\*\*\*  
MATERNAL: \*\*\* CARCASS: \*\*\*



G4 181



POLLED RED DOB: 3/29/2022 REG: C1172273

LYSSY 108/954 | CHRK GENESIS 1500T | BLACK BAYOU 107/3  
LYSSY 103/685 | CHRK MISS REBA  
MAVERICK 17/557  
JEWELLA 004

LYSSY 105/561 | LYSSY'S PINNACLE 92/465 | MAVERICK 17/557  
OASIS II - CLONE 969  
JEWELLA 004 | RED RYDER 8035  
COTTAGE 901

	CED	BW	WW	YW	MILK	SC	REA	%IMF	\$T	\$M	\$FE
EPD	4.2	-0.3	35.9	53.8	8.9	0.9	0.41	0.17	95.64	26.94	2.48
ACC	0.3	0.4	PE	PE	PE	PE	I	I			
%	35%	30%	20%	30%	60%	20%	30%	15%	25%	15%	95%

	BW	WW	YW	SC	REA	%IMF	RIB FAT	RUMP FT	RFI	\$P
RATIO	100	100	103	100	118	108	117	100		
CONT	1	1	5	1	5	5	5	5	0.17	\$95.75
ADJ	74	772	1146	35.61	14.57	2.45	0.27	0.37		

CALVING EASE: \*\*\* DISP.: \*\*\*\*\* EFFICIENCY: \*\*\*  
MATERNAL: \*\*\*\*\* CARCASS: \*\*\*\*



G4 108



SCURS RED WHIT FACE DOB: 10/1/2021 REG: C1172252

VFF ENFORCER 306E | VFF NEW HORIZON 19/3 | MAVERICK 17/557  
VFF MS ADV 77-4 | VFF HONEY GIRL 43/8  
VFF MR 16/2  
009Y

G4 726 | MAVERICK 17/577 | SHELTON 9020  
MISS TABASCO 929/4  
8/4 | INTEGRITY 501  
LYSSY 113/695

	CED	BW	WW	YW	MILK	SC	REA	%IMF	\$T	\$M	\$FE
EPD	5.5	-0.8	37.6	60.2	12	1.1	0.08	0.24	107.34	29.27	15.8
ACC	0.32	0.53	0.53	0.53	0.18	0.5	0.42	0.45			
%	15%	15%	20%	20%	15%	15%	70%	10%	15%	10%	40%

	BW	WW	YW	SC	REA	%IMF	RIB FAT	RUMP FT	RFI	\$P
RATIO	104	97	95	95	100	100	100	100		
CONT	8	6	4	4	1	1	1	1	-1.79	\$122.78
ADJ	75	632	991	32.43	9.83	3.97	0.57	0.82		

CALVING EASE: \*\*\*\*\* DISP.: \*\*\*\*\* EFFICIENCY: \*\*\*\*\*  
MATERNAL: \*\*\*\*\* CARCASS: \*\*\*



# LYSSSY 754



POLLED RED DOB: 9/7/21 REG: C1162456

VFF NEW HORIZON 19/3  
**VFF ENFORCER 306E**  
VFF MS ADV 77-4

MAVERICK 17/557  
VFF HONEY GIRL 43/8  
VFF MR 16/2  
009Y

VFF NEW HORIZON 19/3  
**LYSSSY 96/872**  
LYSSSY 93/688

MAVERICK 17/557  
VFF HONEY GIRL 43/8  
NEW DESIGN 30/910  
JEWELLA 004

	CED	BW	WW	YW	MILK	SC	REA	%IMF	\$T	\$M	\$FE
EPD	4.7	-0.3	47	75	12.3	0.8	0.59	0.15	132.43	31.6	21.93
ACC	0.32	0.55	0.56	0.56	0.18	0.54	0.55	0.6			
%	25%	30%	5%	5%	10%	25%	15%	15%	4%	5%	10%

	BW	WW	YW	SC	REA	%IMF	RIB FAT	RUMP FT	RFI	\$P
RATIO	99	100	100	84	100	61	75	77		
CONT	14	14	14	14	14	14	14	14	3.04	\$75.87
ADJ	78	715	1081	29.22	14.28	1.07	0.18	0.27		

CALVING EASE:	***	DISP.:	*****	EFFICIENCY:	**
MATERNAL:	*****	CARCASS:	**		



# G4 168



DEHORND RED DOB: 1/20/2022 REG: C1172257

CHRK RASIN' CAIN 1780X  
**CHRK RUGER RED LABEL 85A**  
1241/5

CHRK GENESIS 1500T  
720/0 LE  
CJ'S SOUL MAN 168  
515/7

VFF NEW HORIZON 19/3  
**G4 602**  
3/9

MAVERICK 17/557  
VFF HONEY GIRL 43/8  
217/7 LH  
BCE 1001/6

	CED	BW	WW	YW	MILK	SC	REA	%IMF	\$T	\$M	\$FE
EPD	3.6	0.4	24.5	43.7	7.5	0.4	0.37	0.15	78.4	13.93	12.21
ACC	0.3	0.44	0.52	0.52	0.19	0.35	0.52	0.58			
%	50%	55%	55%	55%	85%	55%	35%	20%	45%	65%	65%

	BW	WW	YW	SC	REA	%IMF	RIB FAT	RUMP FT	RFI	\$P
RATIO	97	99	92	95	105	78	82	98		
CONT	6	2	2	2	2	2	2	2	-0.56	\$80.19
ADJ	76	760	1097	32.17	12.77	2.75	0.22	0.46		

CALVING EASE:	***	DISP.:	*****	EFFICIENCY:	***
MATERNAL:	***	CARCASS:	*****		



# LYSSSYS 799



POLLED RED DOB: 10/31/2021 REG: C1162428

VFF NEW HORIZON 19/3  
**VFF ENFORCER 306E**  
VFF MS ADV 77-4

MAVERICK 17/557  
VFF HONEY GIRL 43/8  
VFF MR 16/2  
009Y

CHRK GENESIS 1500T  
**LYSSSY 98/956**  
LYSSSY 103/685

BLACK BAYOU 1071/3  
CHRK MISS REBA 1194/5  
MAVERICK 17/557  
JEWELLA 004

	CED	BW	WW	YW	MILK	SC	REA	%IMF	\$T	\$M	\$FE
EPD	6.2	-1.6	49.8	79.2	11.9	1.7	0.39	0.48	143.09	36.83	17.99
ACC	0.32	0.54	0.55	0.55	0.17	0.53	0.54	0.59			
%	10%	10%	3%	3%	15%	1%	35%	1%	2%	2%	25%

	BW	WW	YW	SC	REA	%IMF	RIB FAT	RUMP FT	RFI	\$P
RATIO	106	93	99	106	99	115	79	80		
CONT	17	16	15	15	15	15	15	15	3.95	\$74.18
ADJ	71	705	1083	36.95	13.94	2.5	0.19	0.31		

CALVING EASE:	*****	DISP.:	***	EFFICIENCY:	**
MATERNAL:	***	CARCASS:	****		



# G4 101



DEHORND RED DOB: 10/4/2021 REG: C1172279

VFF NEW HORIZON 19/3  
**VFF ENFORCER 306E**  
VFF MS ADV 77-4

MAVERICK 17/557  
VFF HONEY GIRL 43/8  
VFF MR 16/2  
009Y

LYSSSY'S RED RAIDER 104/748  
**G4 709**  
901

LYSSSY'S PINNACLE 92/465  
LYSSSY 11/957  
34-05  
H T CHAPMAN 202/6

	CED	BW	WW	YW	MILK	SC	REA	%IMF	\$T	\$M	\$FE
EPD	4.4	-0.3	46.8	71.2	11.6	1.4	0.37	0.23	126.37	35.03	18.62
ACC	0.32	0.53	0.53	0.52	0.16	0.49	0.5	0.55			
%	30%	30%	5%	10%	15%	3%	35%	10%	5%	3%	25%

	BW	WW	YW	SC	REA	%IMF	RIB FAT	RUMP FT	RFI	\$P
RATIO	100	103	98	103	99	100	100	81		
CONT	8	6	4	4	3	3	3	3	-0.17	\$106.21
ADJ	78	673	1016	35.09	14.3	2.82	0.23	0.3		

CALVING EASE:	***	DISP.:	*****	EFFICIENCY:	****
MATERNAL:	*****	CARCASS:	****		



S3 3142



POLLED RED DOB: 3/14/2022 REG: C1160003

VFF ENFORCER 306E VFF NEW HORIZON 19/3  
LYSSY'S CUSTOM MADE 646 VFF MS ADV 77-4  
SWB PURE PLEASURE 126/11 BULLET PROOF 864  
MAGICAL PEARL 31/3

S3 ITCHY TOO 0216

DLF 1189 BLACK JACK 21  
SOULENNE 1014  
6308 3084  
43/5

	CED	BW	WW	YW	MILK	SC	REA	%IMF	\$T	\$M	\$FE
EPD	4.1	0	32	52.1	9.2	0.6	0.15	0.27	93.86	21.71	13.45
ACC	0.31	0.49	0.47	0.47	0.14	0.32	0.46	0.53			
%	35%	40%	30%	35%	55%	35%	65%	5%	25%	25%	55%

	BW	WW	YW	SC	REA	%IMF	RIB FAT	RUMP FT	RFI	\$P
RATIO	101	102	100	95	109	150	113	114		
CONT	7	7	6	6	5	5	5	5	1.95	\$89.15
ADJ	85	710	1074	34.85	13.69	3.23	0.27	0.49		

CALVING EASE:	***	DISP.:	*****	EFFICIENCY:	**
MATERNAL:	***	CARCASS:	*****		



S3 3292



DEHORND RED DOB: 3/29/2022 REG: C1160006

VFF ENFORCER 306E VFF NEW HORIZON 19/3  
LYSSY'S CUSTOM MADE 646 VFF MS ADV 77-4  
SWB PURE PLEASURE 126/11 BULLET PROOF 864  
MAGICAL PEARL 31/3

S3 PINNACLE'S ACE 5077

LYSSY'S PINNACLE 92/465 MAVERICK 17/57  
OASIS II - CLONE 969  
LYSSY 35/782 VFF RYDIN DIRTY 5/2  
LYSSY 101/998

	CED	BW	WW	YW	MILK	SC	REA	%IMF	\$T	\$M	\$FE
EPD	3.6	0	37.3	55.4	8.1	1.1	0.04	0.22	99.11	27.07	9.22
ACC	0.32	0.5	0.48	0.49	0.16	0.34	0.48	0.55			
%	50%	40%	20%	30%	75%	10%	75%	10%	25%	15%	85%

	BW	WW	YW	SC	REA	%IMF	RIB FAT	RUMP FT	RFI	\$P
RATIO	99	95	101	103	99	107	92	65		
CONT	7	7	6	6	5	5	5	5	-0.55	\$95.51
ADJ	87	665	1084	37.61	12.47	2.29	0.22	0.28		

CALVING EASE:	***	DISP.:	*****	EFFICIENCY:	***
MATERNAL:	*****	CARCASS:	*****		



G4 159



HORNS RED DOB: 3/1/2022 REG: C1172253

LYSSY'S TONTO 26/96 LYSSY'S PINNACLE 92/465  
G4 810 Ranger LYSSY 21/33  
G4 427 3/1  
G4 1245

G4 717 MAVERICK 17/577 SHELTON 9020  
MISS TABASCO 929/4  
G4 1331 669/9  
782/7

	CED	BW	WW	YW	MILK	SC	REA	%IMF	\$T	\$M	\$FE
EPD	5	-0.3	29.6	43.3	9	0.8	-0.27	-0.01	76.13	24.73	4.06
ACC	0.32	0.49	I	I	PE	I	I	I			
%	20%	30%	30%	55%	60%	25%	95%	55%	50%	20%	95%

	BW	WW	YW	SC	REA	%IMF	RIB FAT	RUMP FT	RFI	\$P
RATIO	101	102	104	103	93	82	63	89		
CONT	9	2	2	2	2	2	2	2	-2.6	105.67
ADJ	77	669	1063	34.19	9.47	1.91	0.15	0.39		

CALVING EASE:	*****	DISP.:	*****	EFFICIENCY:	*****
MATERNAL:	**	CARCASS:	**		



# **NOTES:**

---

---

---

---

---

---

---

---

---

---

---

---

---

---

---

---

---

---

---

---

---

---

---

**THANK YOU!**

**WE HOPE TO SEE YOU NEXT  
YEAR!**

**NOVEMBER 1, 2024**





**THE MOST ACCESSIBLE, RELIABLE AND PREDICTABLE SOLUTION TO DRIVE GENETIC PROGRESS.**

“Several of our bull sale partners have used Vytelle IVF services starting all the way back in 2020. We work with Vytelle due to the simplicity of the process: **no donor setup, outcome based pricing and convenient satellite locations.** They have allowed us to continually progress our genetics and to make a better product for our customers!”

- Colson Cannon, Cannon Cattle  
- Lauren Lyssy, Lyssy Beefmasters



Visit our website or contact James Stice to learn more about Vytelle’s Genetic Advancement Solutions  
[james.stice@vytelle.com](mailto:james.stice@vytelle.com) | 863-899-4869



SCAN ME

**NO DONOR SET UP**

**OUTCOME BASED PRICING**

**JUST BRING THE COW**





carden

*FOR ALL YOUR  
CROP  
INSURANCE  
NEEDS*

## WE KEEP YOU GROWING...

With 40 years of industry experience, Carden & Associates, Inc. takes pride in researching and implementing the latest in technology and risk management services for our clients. Through our commitment to excellence, we have become one of the largest crop insurance agencies in the nation.

We specialize in risk management products for cattle producers, such as Livestock Risk Protection and Pasture, Rangeland, Forage. Contact us to find out how these plans can protect your valuable cattle operation.

We work hard to keep you growing. Let us show you how!



PROTECTING



YOUR



VALUABLE



ASSETS

863.291.3505 - [WWW.CARDENINSURANCE.COM](http://WWW.CARDENINSURANCE.COM) - 888.296.7533

# RUSSELL KNAPP HAY BALING



RUSSELL KNAPP  
(352) 446 - 9657

Hay Sales  
Grass Planting  
Disking  
Mowing  
Semi Trucking  
Gooseneck Trucking

---

*Groveland, FL*



# SOUTHERN BEEF PERFORMANCE CENTER



*You can't manage what you don't measure*

## ABOUT US

OUR MISSION IS TO PROMOTE THE SEEDSTOCK CATTLE INDUSTRY BY FEEDING AND TESTING CATTLE TO ISOLATE TOP PERFORMING, EFFICIENT GENETICS. BY TESTING GENETIC LINES FOR EFFICIENCY, SEEDSTOCK PRODUCERS CAN PROVIDE DATA TO BACK THEIR BULLS. IN AN INDUSTRY MEASURED IN POUNDS OF PRODUCT, THERE'S LITTLE ROOM FOR UNCERTAINTY WITH GENETICS. TAKE THE GUESS WORK OUT OF HOW YOUR CALF CROP WILL PERFORM AND HELP YOUR BOTTOM DOLLAR.



## WHAT YOU RECEIVE

- SMART FEED EFFICIENCY DATA
- CARCASS ULTRASOUND
- YEARLING MEASUREMENTS
- PROGRESS REPORTS

## CONTACT US

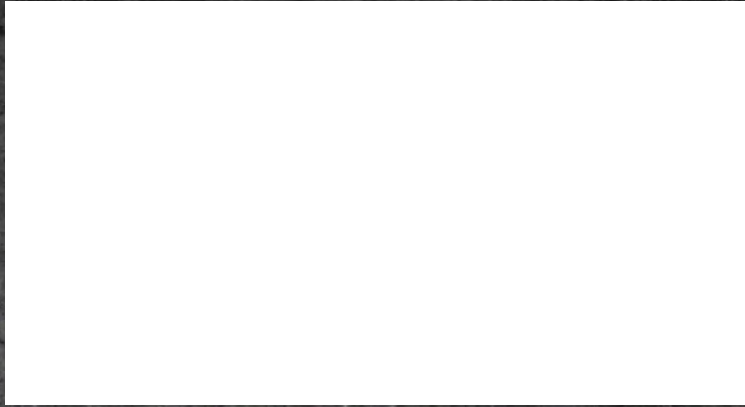
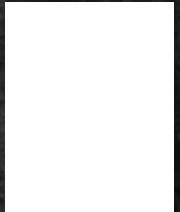
(352) 345 - 3716  
Colson Cannon

*Find us on Facebook!*

southernbeefperformancecenter@gmail.com



19001 RAIN TREE DR  
BROOKSVILLE, FL 34601



PREMIUM  
**POWER**  
BULL SALE